

IMDRF International Medical
Device Regulators Forum

Draft Document
International Medical Device Regulators Forum

Title: Regulatory Authority Assessment Method for Recognition
and Surveillance of Medical Device Conformity Assessment
Bodies

Authoring Group: IMDRF GRRP Working Group

Date: January 24, 2020

This document was produced by the International Medical Device Regulators Forum. There are no restrictions on the reproduction or use of this document; however, incorporation of this document, in part or in whole, into another document, or its translation into languages other than English, does not convey or represent an endorsement of any kind by the International Medical Device Regulators Forum.

Contents

1.0 Scope..... 4

2.0 References..... 5

3.0 Definitions..... 6

4.0 Assessment Cycle and Program..... 9

5.0 Navigating the Assessment..... 17

6.0 Assessment of CAB’s Processes..... 18

ANNEX 1: Sample On-Site Assessment Plan..... 63

Preface

The document herein was produced by the International Medical Device Regulators Forum (IMDRF), a voluntary group of medical device regulators from around the world.

There are no restrictions on the reproduction, distribution or use of this document; however, incorporation of this document, in part or in whole, into any other document, or its translation into languages other than English, does not convey or represent an endorsement of any kind by the International Medical Device Regulators Forum.

Introduction

This is one document in a collection of documents produced by the International Medical Device Regulators Forum (IMDRF) intended to improve the efficiency and effectiveness of the review process for marketing of medical devices. Two documents, IMDRF GRRP WG N59 – *Requirements for Medical Device Conformity Assessment Bodies for Regulatory Authority Recognition* and IMDRF GRRP WG N40 – *Competence, Training, and Conduct Requirements for Regulatory Reviewers*, are complementary documents. These two documents are focused on requirements for organizations conducting market review(s) of medical devices and IVD medical devices and individuals performing regulatory reviews and other related functions under their respective medical device legislation, regulations, and procedures required in their regulatory jurisdiction.

This document IMDRF GRRP WG N61 – *Regulatory Authority Assessment Method for Recognition and Surveillance of Medical Device Conformity Assessment Bodies* is focused on how Regulatory Authorities and their assessors will evaluate or “assess” medical device Conformity Assessment Bodies’ (CAB) compliance to the requirements of N59 and N40.

This collection of IMDRF GRRP documents will provide the fundamental building blocks by providing a common set of requirements to be utilized by the Regulatory Authorities for the recognition and surveillance of entities that perform regulatory reviews and other related functions. It should be noted that in some jurisdictions the recognition process is called designation, notification, registration, or accreditation.

IMDRF developed these GRRP documents to encourage and support global convergence of regulatory systems, where possible, seeking to strike a balance between the responsibilities of Regulatory Authorities to safeguard the health of their citizens as well as their obligations to avoid placing unnecessary burdens upon medical device CABs or the regulated industry. IMDRF Regulatory Authorities may add additional requirements beyond this document when their legislation requires such additions.

The purpose of this document is to define the requirements for CABs performing regulatory reviews and other related functions for medical devices, including IVD medical devices. Both the regulatory review process and the decisions made by a CAB may be subject to further review by the applicable Regulatory Authority in the countries and regions where the medical device is manufactured and/or placed on the market.

1.0 Scope

This document defines the content of the Regulatory Assessment Program and provides guidance on the process-based assessment method. The Assessment Program defines how Regulatory Authorities will recognize, surveil, and re-recognize CABs that review medical devices or IVD medical device marketing submissions and may perform other related functions, as shown in Figure 1.

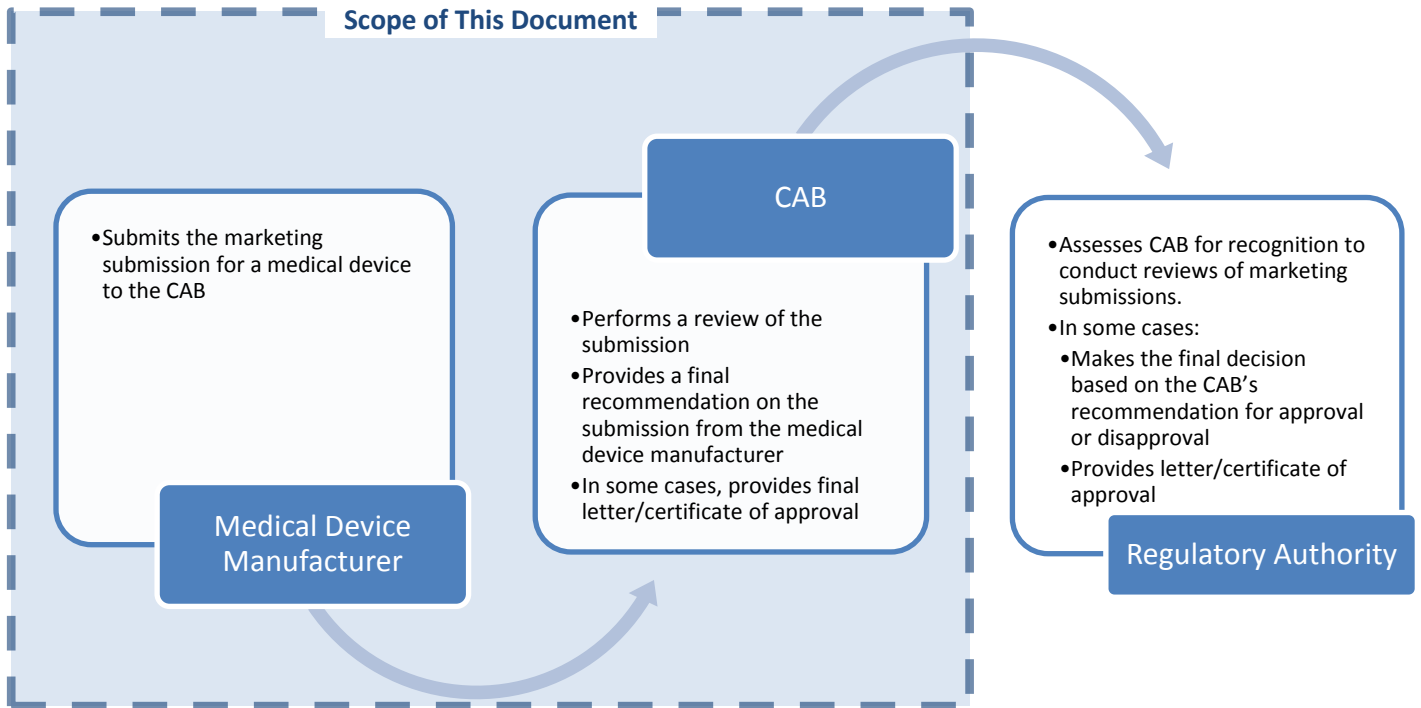


Figure 1. Typical Roles and Responsibilities of CABs and Regulatory Authorities

The scope of activities for which the CAB will be recognized is limited to the regulatory review activities performed by CABs and not to any subsequent review activities or decisions made by Regulatory Authorities, and is indicated by the dotted box in Figure 1. In some cases, the final marketing decision for a medical device is made by the recognizing Regulatory Authority after the CAB completes their review. In these cases, “certification decision” as used in this document refers to the final regulatory review recommendation made by the CAB that is subsequently communicated to the Regulatory Authority.

Recognition, surveillance, and re-recognition is based on a process-based assessment method utilizing assessment tasks related to the requirements found in IMDRF GRRP WG N59 and N40. The assessment method defined in this document will be used to perform the different assessment activities within the Assessment Program. The assessment method specific to the marketing review of a medical device or IVD medical device may consider additional requirements from the jurisdictions addressed in the Assessment Program.

2.0 References

Normative Reference:

- International Organization for Standardization (ISO)/ International Electrotechnical Commission (IEC) ISO/IEC 17065:2012 - *Conformity Assessment – Requirements for bodies certifying products, processes and services*

General References:

- IMDRF GRRP WG/N40:2017 *Competence, Training, and Conduct Requirements for Regulatory Reviewers*
- IMDRF GRRP WG/N47:2018 *Essential Principles of Safety and Performance of Medical Devices and IVD Medical Devices*
- IMDRF GRRP WG/N52:2019 *Principles of Labelling for Medical Devices and IVD Medical Devices*
- IMDRF Standards WG/N51:2018 *Optimizing Standards for Regulatory Use*
- IMDRF GRRP WG N59 - *Requirements for Medical Device Conformity Assessment Bodies for Regulatory Authority Recognition*
- GHTF/SG1/N78:2012 *Principles of Conformity Assessment for Medical Devices.*
- GHTF/SG1/N46:2008 - *Principles of Conformity Assessment of In Vitro Diagnostic (IVD) Medical Devices.*
- GHTF/SG1/N71:2012 - *Definition of the Terms 'Medical Device' and 'In Vitro Diagnostic (IVD) Medical Device.'*
- GHTF SG1/N077:2012 *Principles of Medical Device Classification*
- GHTF SG1/N045:2007 *Principles of In Vitro Diagnostic (IVD) Medical Device Classification*
- ISO/IEC 17000:2004 – *Conformity assessment – Vocabulary and general principles*
- ISO/IEC 17067:2013 - *Conformity assessment -- Fundamentals of product certification and guidelines for product certification schemes*
- ISO 9000:2015 – *Quality Management Systems – Fundamentals and Vocabulary*
- ISO 13485:2016 – *Medical Devices – Quality Management Systems – Requirements for Regulatory Purposes*

3.0 Definitions

- 3.1** *Assessment:* To prevent confusion between marketing review activities performed by a CAB and the activities performed by medical device Regulatory Authority assessors for CAB recognition and surveillance, in this document, the latter are designated as “assessments.”
- 3.2** *Audit:* A systematic, independent, and documented process for obtaining records, statements of fact or other relevant information and assessing them objectively to determine the extent to which specified requirements are fulfilled.
(ISO 17000:2004)

NOTE: In this document, “audit” refers to internally or externally generated assessments of the CAB itself, and not to activities performed by non-Regulatory Authorities to determine a medical device manufacturer’s conformity with quality management system requirements or other medical device regulatory requirements.

- 3.3** *Competence:* Ability to apply knowledge and skills to achieve intended results.
(ISO 9000:2015, Clause 3.10.4)

3.4 *Conformity Assessment Body (CAB)*: A body other than a Regulatory Authority engaged in determining whether the relevant requirements in technical regulations or standards are fulfilled.

(IMDRF/GRRP WG/N040:2017)

3.5 *Marketing Submission*: A regulatory submission for marketing certification for a medical device that is submitted to a Conformity Assessment Body. This submission includes the technical documentation and an explanation of how the technical documentation demonstrates that the medical device conforms with essential principles of safety and performance and other relevant regulatory requirements and guidelines.

(IMDRF GRRP WG N59)

3.6 *Medical device*: any instrument, apparatus, implement, machine, appliance, implant, reagent for in vitro use, software, material or other similar or related article, intended by the manufacturer to be used, alone or in combination, for human beings, for one or more of the specific medical purpose(s) of:

- diagnosis, prevention, monitoring, treatment or alleviation of disease,
- diagnosis, monitoring, treatment, alleviation of, or compensation for, an injury,
- investigation, replacement, modification, or support of the anatomy, or of a physiological process,
- supporting or sustaining life,
- control of conception,
- disinfection of medical devices,
- providing information by means of in vitro examination of specimens derived from the human body;

and does not achieve its primary intended action by pharmacological, immunological, or metabolic means, in or on the human body, but which may be assisted in its intended function by such means.

Note: Products which may be considered to be medical devices in some jurisdictions but not in others include:

- disinfection substances,
- aids for persons with disabilities,
- devices incorporating animal and/or human tissues,
- devices for in-vitro fertilization or assisted reproduction technologies.

(GHTF/SG1/N71:2012)

For clarification purposes, in certain regulatory jurisdictions, devices for cosmetic/aesthetic purposes are also considered medical devices.

3.7 *Quality Management System*: A QMS comprises activities by which the organization identifies its objectives and determines the processes and resources required to achieve desired results. The QMS manages the interacting processes and resources required to

provide value and realize results for relevant interested parties. The QMS enables top management to optimize the use of resources considering the long and short term consequences of their decision. A QMS provides the means to identify actions to address intended and unintended consequences in providing products and services.
(ISO 9000: 2015, Clause 2.2)

3.8 *Regulatory Authority:* A government body or other entity that exercises a legal right to control the use or sale of medical devices within its jurisdiction, and that may take enforcement action to ensure that medical products marketed within its jurisdiction comply with legal requirements.
(GHTF/SG1/N78:2012)

3.9 *Regulatory Review:* A review of a medical device that is conducted to assess conformity with regional regulations or standards.

Note 1: A regulatory review is performed by Regulatory Reviewer(s), and on occasion, the Regulatory Authority and/or recognized Conformity Assessment Body may consult with Technical Expert(s) to assist in specific aspects of the regulatory review process.

Note 2: Depending on the complexity of the medical device, it may be necessary for a team of regulatory reviewer(s) and/or technical expert(s) to conduct the regulatory review to ensure all required competencies are addressed.

Note 3: A regulatory review consists of an assessment of documentation and/or evaluation/testing of physical medical devices and includes the recommendation and associated decision-making processes. The scope of the review is dependent on the Regulatory Authority's requirements.
(IMDRF GRRP WG/N40: FINAL 2017)

3.10 *Regulatory Reviewer:* An individual from a Regulatory Authority and/or their recognized CAB responsible for routinely performing regulatory reviews of medical devices. This may include for example, premarket reviewers, product specialists, assessors, etc.
(IMDRF GRRP WG/N40: FINAL 2017)

3.11 *Technical Documentation:* The documented evidence, normally an output of the quality management system, that demonstrates compliance of a device to the *Essential Principles of Safety and Performance of Medical Devices*.
(GHTF/SG1/N78:2012 and GHTF/SG1/N46:2008)

3.12 *Technical Expert:* For the purposes of this document, a technical expert is an individual who is consulted on an *ad hoc* basis to provide specific technical knowledge or expertise to the regulatory review process. This may include an individual employed by the Regulatory Authority or their recognized CAB or external to these organizations, as permitted by the Regulatory Authority.

Note 1: Areas of expertise could include, for example, clinical, design, manufacturing, etc.
(IMDRF GRRP WG/N40: FINAL 2017)

4.0 Assessment Cycle and Program

This document defines a consistent Assessment Cycle and Assessment Program for Regulatory Authorities to assess CABs for recognition and for the maintenance of recognition through surveillance activities. A key element is to ensure consistency in the Assessment Program implementation, regardless of the designated assessment team and the CAB.

ISO 17011:2005 allows for an Assessment Program with the maximum of a 5-year cycle. For the regulated medical device sector, a CAB Assessment Program should follow a 3- or 4-year cycle. Regardless of whether a 3 or 4-year cycle is chosen, the Assessment Program described in this document makes provision for additional Special Assessments, if required, to provide confidence in a recognition decision. The recognizing Regulatory Authority should assess the resources required for a 3- or 4- year cycle, considering assessor personnel, assessment management, travel budgets, etc., before committing to a particular cycle length for their Assessment Program. A 4-year cycle is illustrated in Figure 1.

Please note that “nonconformity” as used throughout this document refers to observations related to the CAB’s management system and processes. The term “deficiency” is used to refer to technical or regulatory inadequacies noted during the CAB’s review of specific marketing submissions.

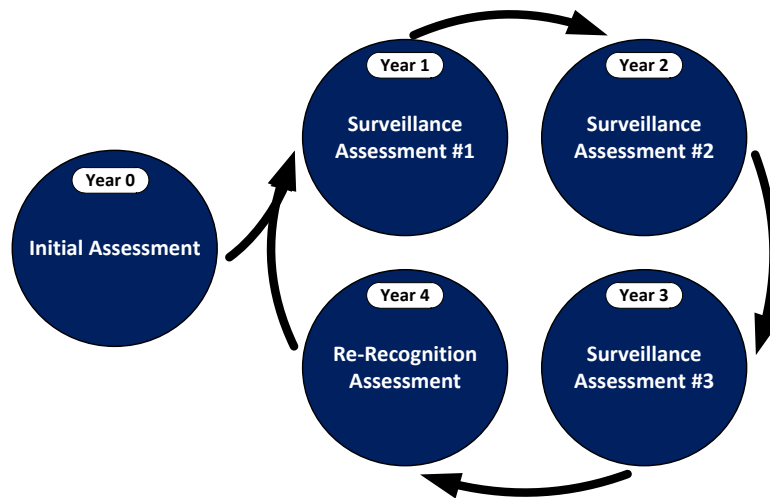


Figure 1: 4-Year Assessment Cycle

The Assessment Cycle includes an Initial Assessment, annual Surveillance Assessments, and a Re-recognition Assessment. Figure 2 identifies the different assessment activities within each aspect of the Assessment Program.

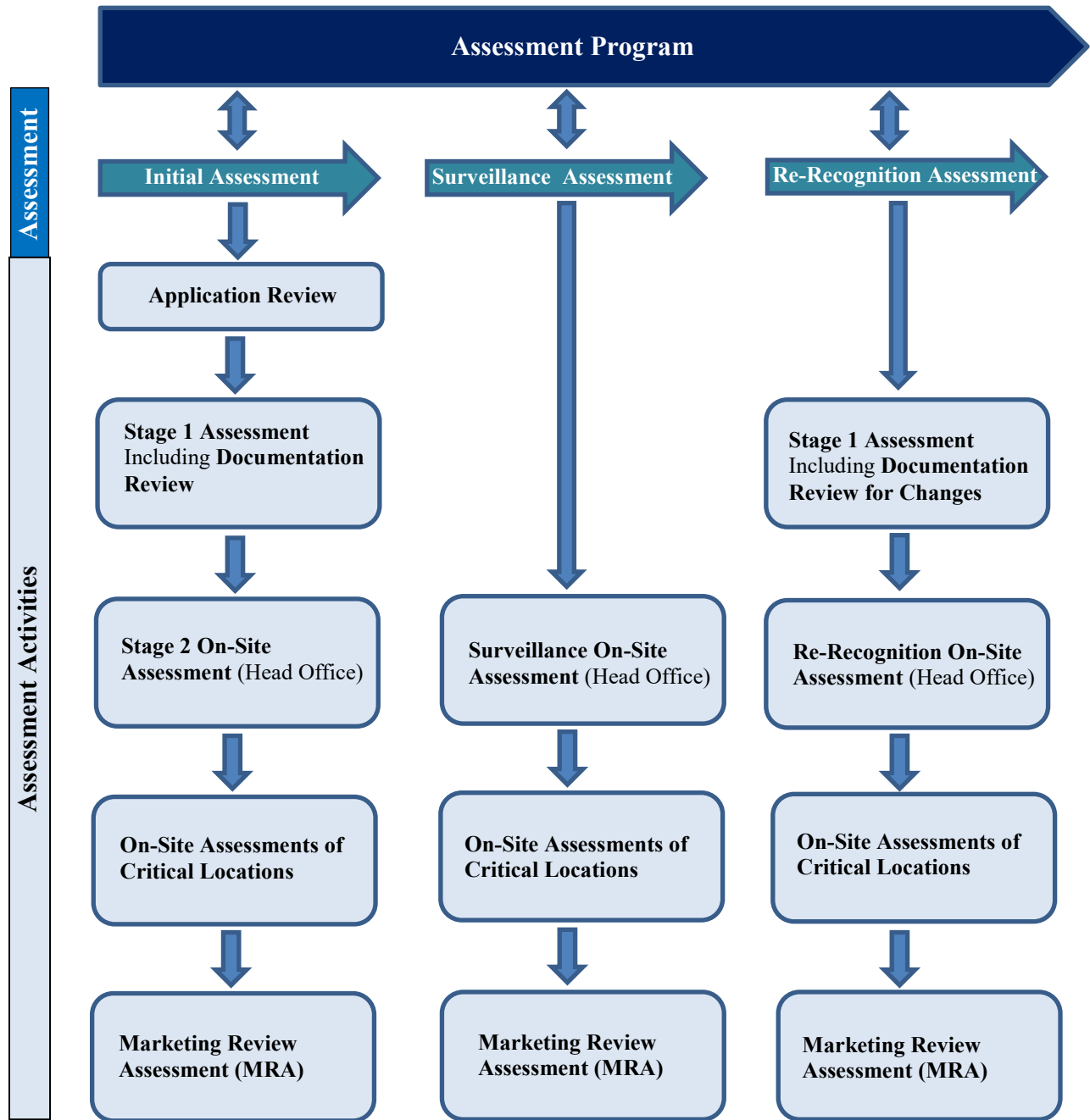


Figure 2: Assessment Program with Assessment Activities through the Assessment Cycle

The application of the Assessment Program may be modified as needed, for example with additional Special Assessments, to take into account information collected throughout the Assessment Cycle of a particular CAB.

Regulatory Authority assessment planning should consider:

- Past performance of the CAB, including the previous assessment and identified nonconformities;
- A review of documentation for any significant changes at the CAB, including those necessary to account for any changes in the recognizing regulatory program or requirements;
- The key procedures of the CAB; and,
- A selection of medical device marketing submissions, where possible, that may be identified by safety concerns, observed nonconformities, and other signals associated with medical devices that the CAB reviewed or other medical devices of the same type.

4.1 Assessment Program Roles and Responsibilities

The key roles and responsibilities in the Assessment Program are as follows:

Assessment Team including, as necessary, an assessment team leader and assessor(s):

- Performs the assessment activity, according to the Assessment Program;
- Provides a recommendation relative to the recognition status of the CAB;
- Makes recommendations for changes to or adjustments to the implementation of the Assessment Program for specific CABs, as necessary;
- Makes recommendations for other location assessments and marketing review sampling; and,
- Reviews and approves the CAB's response to assessment findings.

Assessment Program Manager:

- Interfaces with the CAB to collect the application and associated information, communicate outcome of assessment activities;
- Drafts, maintains and updates an Assessment Program for each CAB;
- Ensures the assessment activities are planned and implemented according to the Assessment Program;
- Assigns the assessment team members, specifies their role, and provides them with necessary information for the assessment activity; and,
- Reviews assessment outcomes, performs quality checks of the assessment activities, and prepares a final assessment outcome recommendation.

Note: if the recognizing Regulatory Authority chooses to have more than one Assessment Program Manager, an Assessment Program Manager may not act as an assessor for a CAB for which he/she manages the Assessment Program, in order to remain independent from the outcome of the assessment activities.

Recognizing function within the Regulatory Authority:

- Approves implementation of the Assessment Program to a CAB; and,
- Makes recognition decisions.

4.2 Purpose of Assessments within the Assessment Program

The purpose of the Initial Assessment includes the following:

- Define an individual Assessment Program plan for the particular CAB; and,
- Assessment of the compliance of the particular CAB's management system to all regulatory requirements including IMDRF GRRP WG N59 and N40 documents, in order to enable the recognizing Regulatory Authority to make a decision on whether to recognize the CAB.

The purpose of the Surveillance Assessment includes maintaining confidence that the CAB continues to fulfill the regulatory requirements including IMDRF GRRP WG N59 and N40 documents between re-recognition assessments.

The purpose of the Re-recognition Assessment includes the assessment of the continued compliance of the CAB's management system to satisfy all regulatory requirements including IMDRF GRRP WG N59 and N40 documents, in order to enable the recognizing Regulatory Authority to make a decision on whether to renew the recognition of the CAB.

The scope of recognition may include medical device categories established by the Regulatory Authority having jurisdiction, or by future IMDRF guidance.

4.3 Assessment Activities throughout the Assessment Cycle

4.3.1 Application Review

Before proceeding with the assessment of the CAB, the recognizing Regulatory Authority shall conduct a review of the application and related information to ensure that the information about the CAB and its management system is sufficient for the conduct of the assessment.

4.3.2 Stage 1 Assessment

The Stage 1 Assessment shall be performed to:

- Review the CAB's management system documentation to confirm that it covers all regulatory requirements, including IMDRF GRRP WG N59 and N40 documents;
- Collect information necessary to define the scope of recognition, including the types of medical devices to be covered by the CAB's reviews;
- Evaluate the CAB's understanding of regulatory requirements, technical standards, and guidelines relevant to the proposed scope of recognition, including IMDRF GRRP WG N59 and N40 documents;

- Identify the CAB's locations and site-specific conditions;
- Evaluate if the CAB has planned and/or performed internal audits and management reviews;
- Gain sufficient understanding of the CAB's structure, operations, and management system to define the individual Assessment Program plan;
- Evaluate the preparedness of the CAB to submit to the Stage 2 On-Site Assessment; and,
- Review the need for specific resources during the Stage 2 On-Site Assessment.

A recognizing Regulatory Authority may carry out part of the Stage 1 Assessment at the CAB's head office.

Stage 1 Assessment findings shall be documented and communicated to the CAB, including the identification of any identified areas of concern that could be classified as a nonconformity during the Stage 2 On-Site Assessment.

4.3.3 Stage 2 On-Site Assessment

The Stage 2 On-Site Assessment is to evaluate the implementation, including effectiveness, of the CAB's management system.

The Stage 2 On-Site Assessment shall take place at the CAB's head office, which is defined as the main business location for the CAB responsible for management, monitoring, and oversight of the medical device regulatory review program. The assessment shall include at least the following:

- Evaluate the conformity of the CAB's management system documentation to meet all the regulatory requirements including IMDRF GRRP WG N59 and N40 documents;
- Evaluate the evidence of implementation, monitoring, measuring, reporting and reviewing by the CAB of its activities against policies, procedures and objectives from its management system (consistent with the expectations for recognition);
- Review the operational controls of the CAB's processes, including when implemented by external resources;
- Confirm that the CAB conducted internal audits and management reviews; and
- Confirm the competence of the CAB and the resources available necessary to fulfill the obligations for the scope of recognition.

The assessment shall move to the next phase of the assessment process once the recognizing RA has determined that no significant nonconformities are present. At this stage, or after the completion of any additional on-site assessments as described in Section 4.3.4 below if any such assessments are performed, the CAB is initially authorized to undertake regulatory reviews and proceeds to the next stage of assessment. The recognizing Regulatory Authority may require that the CAB successfully complete the recognition process prior to issuing final certification decisions.

4.3.4 On-Site Assessment at Critical Locations of the CAB

When any of the critical functions listed below are undertaken at locations other than the head office, including by external organizations, the recognizing Regulatory Authority shall consider the performance of an assessment at such critical locations throughout the assessment cycle.

Critical locations are those locations that perform any of the following functions on behalf of the CAB:

- The development and approval of the management system policies, processes, and procedures for the marketing review of medical device marketing submissions under the recognition program;
- The review and acceptance of submissions from medical device manufacturers and the issuance of contracts, including the determination of the scope and timing of the reviews;
- The assignment of review teams;
- The conduct of the regulatory review process (Sections 7.3 – 7.7 of N59);
- Competence management activities that apply to regulatory reviewers, technical experts, and final regulatory reviewers; and
- The management, monitoring, and oversight by the CAB of the medical device marketing review program.

On-Site Assessment of critical locations is performed to:

- Review the relationship between the head office of the CAB and the critical location;
- Review, if applicable, the arrangements between the head office of the CAB and the critical location;
- Evaluate the management system operated at the critical location to satisfy the requirements of the CAB;
- Evaluate the conformity of the activities undertaken by the critical location on behalf of the CAB to the requirements of the CAB's management system or to the arrangements between the head office of the CAB and the critical location;
- Evaluate the conformity of activities undertaken by the critical location on behalf of the CAB to the corresponding regulatory requirements including IMDRF GRRP WG N59 and N40 documents; and,
- Evaluate the controls in place at the critical location that would enable the CAB to monitor the activities at that location.

4.3.5 Marketing Review Audit (MRA)

After initial authorization, the recognizing Regulatory Authority shall evaluate the competence of the personnel performing regulatory reviews and the methods used during all stages of the regulatory review process, as outlined in Table 1 of N59, during a regulatory review of a medical device marketing submission during the Assessment Cycle. This includes screening, evaluation, recommendation, and certification decision (if applicable), as well as documentation of these steps.

The purpose of assessed reviews is to verify the performance of a CAB with regards to:

- Conformity of the practices to the requirements of section 7 of IMDRF GRRP WG documents N59;
- Ability of the CAB to determine the conformity of medical device manufacturers to regulatory requirements, standards, and guidelines;
- Ability of the CAB to reliably report on the review findings including the nonconformities; and,
- Ability of the CAB to select review teams with the necessary competence.

The recognizing Regulatory Authority shall select the reviews to assess. This selection will depend on the desired scope of recognition. The mode of assessment of the reviews can include on-site assessments at the CAB's facilities.

After selection of the reviews to be assessed, the CAB shall provide to the recognizing Regulatory Authority the following information for each such review:

- Marketing submission provided by the manufacturer, as defined in N59; and
- All of the CAB's documentation related to the regulatory review process and decision-making.

As part of this assessment, the RA will confirm the regulatory review certification decisions made by the CAB.

There should be no direct communication between the assessor and the medical device manufacturers during the assessment activities regarding the reviews being assessed.

4.3.6 Additional Assessment Considerations after Initial Recognition

In addition to the assessment factors listed above, on-site and review assessment as part of surveillance and re-recognition shall include the following factors:

- Avoiding assessments involving the same regulatory reviewers assessed in previous cycles
- Sufficient diversity and complexity of medical devices within the scope of recognition (classification, technological characteristics, medical specialties involved)
- The CAB's activities related to handling of new safety information involving medical devices that the CAB certified, or known problems with manufacturers of certified medical devices that have been identified from adverse events, post-market surveillance data, etc.
- Assessments involving new certifications as well as changes in certification
- Ensuring that any actions taken to address nonconformities identified in previous recognition and surveillance cycles were effective

4.3.7 Surveillance On-Site Assessment

The Surveillance On-Site Assessment is to evaluate the implementation, including effectiveness, of the CAB's management system.

The Surveillance On-Site Assessment shall take place at the CAB's head office, and should be considered for other locations where the critical functions listed in Section 4.3.5 are performed. It shall include at least the following:

- Review of internal audits and management review;
- Review of Competence Management activities;
- Review of actions taken on nonconformities identified during the previous assessment;
- Treatment of complaints and appeals;
- Evaluation of the effectiveness of the management system with regard to achieving the CAB's objectives as it relates to the scope of recognition;
- Evaluate records of review and decision on conformity of medical device manufacturers to regulatory requirements;
- Evaluate continuing operational control; and,
- Review any changes.

Surveillance On-Site Assessment shall be conducted annually at the anniversary date of the Stage 2 Assessment, with a tolerance of +/- 3 months.

It is recommended that the recognizing Regulatory Authority, as part of the assessment planning and preparation, reviews a sample of regulatory reviews made available by the CAB.

4.3.8 Re-Recognition On-Site Assessment

The Re-Recognition On-Site Assessment shall consider the performance of the CAB's management system over the period of recognition and include the review of assessment reports from the last assessment cycle.

The Re-Recognition On-Site Assessment may need to have a Stage 1 Assessment in situations where there have been significant changes to the CAB, its management system, or of the requirements from the recognizing Regulatory Authority.

The Re-Recognition On-Site Assessment shall take place at the CAB's head office, and should be considered for other locations where the critical functions listed in Section 4.3.5 are performed. It shall include the following:

- Evaluate the effectiveness of the CAB's management system in its entirety in the light of internal and external changes and its continued relevance and applicability to the scope of recognition;
- Confirm the continued conformity of the CAB's management system to regulatory requirements including IMDRF GRRP WG N59 and N40 documents; and,

- Confirm the commitment of the CAB to maintain the effectiveness of the management system.

4.3.9 Special Assessments

A Special Assessment is in addition to other assessment activities defined in the typical assessment cycle. A Special Assessment may be triggered by:

- The CAB requesting a change of the scope of recognition or following a notice of change potentially affecting the result of prior assessments;
- The recognizing Regulatory Authority based on signals indicating concerns with regards to the CAB's activities; or,
- The results of previous regulatory assessment activities.

5.0 Navigating the Assessment

The goal of an assessment is to ensure CABs make decisions that provide confidence in the conformity of medical devices to regulatory requirements when placed on the market.

Each process will require the assessment team to accomplish assessment tasks to determine if the process outcomes and the process purpose are achieved and the corresponding risks appropriately addressed. Within the description of the assessment tasks, there are references to the applicable clause(s) of the ISO/IEC 17065:2012 standard and to the clauses of the IMDRF/GRRP WG/N59 documents. If the clause is listed without subclauses, then all subclauses apply to the task. For example, if the applicable clause for a task is listed as IMDRF/GRRP WG/N59: 6.1, then all subclauses of 6.1 (6.1.1, 6.1.2, etc.) apply to the task. If specific subclauses are listed for a task, (for example, IMDRF/GRRP WG/N59: 10.1.1), then the entire clause 10.1 may not apply to a particular task, only specific subclauses. These references have been provided to assist the assessors in assuring all the requirements are addressed during the assessments. The referenced clauses are not intended to be an all-inclusive list of clauses that may apply to a given task, but are intended to guide the assessor to specific clauses that are most directly applicable.

During the assessment, it is important that the assessors are mindful of any instances where the CAB demonstrates failure to fulfill any of the defined requirements listed in the assessment tasks, and that these nonconformities are recorded in appropriate detail.

Particular attention should be paid to the potential interrelationship of the nonconformities. For example, assessment nonconformities in both the Evaluation and Recommendation processes and in competence management may in combination be significant since the planning of medical device manufacturer regulatory reviews, the assignment of competent reviewers and the systematic characterization of the decision-making, are essential for determining a medical device manufacturer's conformity to regulatory requirements.

This document makes uses of electronic cross-references. In instances where tasks are linked, an electronic cross-reference has been imbedded. Simply use Ctrl-click to access the task cross-reference when needed.

6.0 Assessment of CAB's Processes

This section describes the processes evaluated by the assessment team. The assessment processes are each presented with a purpose, outcome, risks relative to the process, and the list of specific tasks for that processes.

6.1 Process: Management

6.1.1 Purpose

The purpose of assessing the Management process is to verify that top management ensures that an adequate and effective quality management system has been established and maintained by the CAB for the control of all activities related to regulatory review and the decisions on conformity of medical device manufacturers to regulatory requirements. The assessment should conclude with a reflection on the Management process in order to confirm the commitment of top management and the effective implementation of the CAB's management system.

6.1.2 Outcomes

As a result of the assessment of the Management process, objective evidence will show whether the CAB has:

- Identified processes needed for their management system, their application throughout the organization, and their sequence and interaction.
- Established a management system to support the effective regulatory review of medical device marketing submissions and decisions regarding the manufacturers';
- conformity to regulatory requirements; and,
- ability to ensure adherence with legal and contractual requirements and other requirements to which the organization is committed.
- Established quality objectives at relevant functions and levels within the organization consistent with the quality policy and ensured that these are periodically reviewed for continued suitability.
- Committed sufficient resources and competent personnel.
- Assigned responsibility and authority to personnel and established the organizational structure to ensure quality is not compromised.
- Defined, documented, and implemented procedures for the control of impartiality, the protection of confidential information, and the transparency with regards to regulatory reviews and decisions.
- Ensured the continued effectiveness of the management system and its processes.

6.1.3 Risks Relative to this Process

The failure of the management process poses the following risks:

- Lack of consistency in the CAB’s practices;
- Lack of impartiality of the regulatory reviewers and staff involved in the regulatory review and decision activities;
- Lack of competency of the regulatory reviewers and staff involved in the regulatory review and decision activities;
- Lack of reliability in the regulatory reviews;
- Lack of credibility of the decision; and/or,
- Lack of proper communication with the recognizing Regulatory Authorities, preventing the implementation of targeted enforcement actions towards delinquent medical device manufacturers.

6.1.4 Assessment Tasks

6.1.4.1 Review the documentation on legal responsibility, liability, and financing. Verify the eligibility as a candidate CAB.

Applicable requirements

ISO/IEC 17065:2012 clauses: 4.1.1, 4.3

IMDRF/GRRP WG/N59 clauses: 4.1.1, 4.1.2, 4.1.3, 4.3.1

➤ **Legal entity**

Guidance

It is important that the assessment team accurately understands the structure of the legal entity to which the CAB belongs. It is especially important in complex cases such as an CAB belonging to a larger group, where the delineation of the legal entities within the group may influence impartiality, ability to enter into contractual arrangements, and the use of external resources.

The types of legal entities and the meaning of registration of the legal entity may vary due to regional or country-specific laws and regulations.

The applicant must clearly delineate the perimeter of the legal entity, and establish a specific address, where the management responsible for the conformity assessment program is employed by that legal entity. (See IMDRF/MDSAP WG/N29 for a discussion of “legal entity” as it applies to audits.)

Typical evidence

Information regarding the legal entity to which the CAB belongs, its organizational structure, ownership, and the legal or natural persons exercising control over the entity. The information would include documentation made publicly available by the CAB (for example, website or promotional documentation), official documents (such as a record of business registration or certificate of insurance policy), or other internal documents.

➤ **Financial stability**

Guidance

The assessors should verify that the CAB has sufficient resources to support its operations and enable it to fulfill recognition criteria.

Analysis of income sources is also important to assess independence from other entities.

The CAB's business should be sufficiently diversified so that the loss of a single client does not seriously jeopardize its financial stability or compromise impartiality.

Typical evidence

Annual report, fee structure, etc.

➤ **Liability insurance**

Guidance

The CAB must provide evidence as to the method used to evaluate the risks from its activities, and utilized to determine the insurance level.

Regulatory Authority assessors should ensure that the elements listed in the requirements are documented, including:

- Geographic regions included in the coverage;
- Profile of risk for the range of medical devices that are subject to regulatory review; and
- Scope of activities undertaken for medical device regulatory reviews.

Where an CAB claims that their liability is insured through arrangements with a related legal entity, the CAB should document how those arrangements fulfill the elements of the requirement identified above.

Typical evidence

Documentation of the risk assessment, records of information provided to the insurer, certificate of insurance.

➤ **Eligibility**

Guidance

Although an on-site assessment is unlikely to reveal legal judgments against the CAB, the assessment team should still inquire about the CAB's history with respect to these matters.

Typical evidence

Verbal confirmation.

6.1.4.2 Verify that the required management system documentation has been defined and documented.

Applicable requirements ISO/IEC 17065:2012 clauses: 8.0

IMDRF/GRRP WG/N59 clauses: 8.0

Guidance

Most CABs offer a broad range of management system certification services, beyond the medical device regulatory review scheme. The assessor should verify that the CAB's management system clearly identifies elements applicable to the medical device regulatory review scheme.

The CAB's management system documentation should state the documents or requirements to which the CAB claims compliance, including regulations, standards, and directives. The CAB's management system must specify whether it satisfies option 1 or 2 of ISO/IEC 17065:2012 section 8.1.

The CAB's management system should be appropriate to the nature, and scale of its regulatory review activities. The management system should be capable of supporting and ensuring consistent compliance with the requirements applicable to the regulatory review and certification program for medical devices.

Typical evidence

A list of related documentation on the implementation, maintenance and operation of a quality management system, which would fulfill the requirements of IMDRF/GRRP WG/N59.

6.1.4.3 Verify that a quality policy and objectives have been set at relevant functions and levels within the organization. Ensure the quality objectives are measurable and consistent with the quality policy. Confirm appropriate measures are taken to achieve the quality objectives.

Applicable requirements

ISO/IEC 17065:2012 clauses: 8.1

IMDRF/GRRP WG/N59 clauses: Not Applicable

Guidance

While the term "quality policy" is not explicitly used in ISO/IEC 17065:2012 or IMDRF/GRRP WG/N59, the CAB's top management should express its overall intentions and direction related to the fulfilment of the requirements of the medical device regulatory review scheme.

The assessor should verify that the CAB's top management ensures that the quality policy, like other management system policies, is communicated and understood at all levels of the organization.

The assessor should verify that the CAB bases quality objectives on parameters that are critical to the conformity to requirements of the medical device regulatory review scheme. Quality objectives relate to indicators that are critical to the ability of the CAB to conduct planned medical device regulatory reviews and make informed decisions (for example: maintaining access to sufficient numbers of competent regulatory reviewers and technical experts to fulfill regulatory review obligations; and to regulatory reviewers qualified for a technical area/product related to the number of regulatory reviews in this technical area, etc.).

A quality objective should be expressed as a measurable target or goal in order to feedback into the management system to ensure effective implementation.

Typical evidence

Documented policy and objectives, which may include such things as: number of regulatory review reports completed on time, timely investigation and closure of complaints regarding regulatory review-related activities.

6.1.4.4 Review the CAB's organizational structure and related documents to verify that they include provisions for responsibilities and authorities. This must include the identification of functions responsible for:

the overall program;

- **the timely exchange of information with regulatory authorities;**
- **ensuring that quality management system requirements are effectively established and maintained;**
- **reporting to top management on the performance of the quality management system; and**
- **on any need for improvement.**

Applicable requirements

ISO/IEC 17065:2012 clauses: 5.1

IMDRF/GRRP WG/N59 clauses: 5.1, 6.1.11, 9.1

➤ **Organizational structure**

Guidance

The assessor should verify that the CAB has documented its organizational structure to identify the different positions or roles, their responsibilities and authorities and the inter-relationships between them. It is important for the assessors to not only understand the internal organizational structure of the CAB, but also how the organization interacts with external resources.

Typical evidence

Organizational chart, job description, management system procedures, etc.

➤ **Top management**

Guidance

As part of the organizational structure review, the assessor should identify the job functions among the CAB's top management that are responsible for:

- Implementation and reporting on the performance of the management system;
- Performance of regulatory reviews;
- Decisions on conformity to regulatory requirements;
- Establishment of the contract with the medical device manufacturer and external resources;
- Responding to and investigating complaints and appeals; and
- Timely exchange of information with regulatory authorities.

Top management has other responsibilities that will be assessed through other assessment tasks.

The CAB should ensure that the remuneration of top management does not depend on the result of regulatory reviews. Otherwise this would affect the impartiality of the CAB.

Typical evidence

Organizational chart, job description, management system procedures, etc.

➤ **Responsibility and authority**

Guidance

The CAB must make clear to each person concerned their duties, responsibilities and authorities. Assessors should review the CAB's organizational structure and related documents to verify that they include provisions for responsibilities and authorities. This must include the identification of functions responsible for: the overall program; the timely exchange of information with regulatory authorities; and, ensuring that quality management system requirements are effectively established and maintained.

The CAB may document responsibilities and authorities for each individual involved in the regulatory review and decision process in different ways including job descriptions, process descriptions, procedures, or individual assignments, project plans, etc.

For purposes of regulatory review, the applicant for recognition as a CAB is deemed to be the legal entity and is where the management responsible for the regulatory review program is employed.

The management for the regulatory review program is directly responsible for, manages, and retains authority for the following:

- Establishment of the contract with the medical device manufacturer (including the requirements in IMDRF/GRRP WG/N59 Clause 7.12.1);
- Identification of competence requirements for any internal or external regulatory reviewer or technical expert to perform specific activities (including the requirements in IMDRF/GRRP WG/N40); and,
- Final review and decision-making on conformity to regulatory requirements (including requirements in IMDRF/GRRP WG/N59 Clauses 7.5 and 7.6).

These listed activities cannot be delegated outside of the applicant's legal entity, even to a related organization or a subsidiary. Under the regulatory review program, these related organizations or subsidiaries are regarded as separate legal entities.

(See IMDRF/GRRP WG/N40.)

Link with other assessment tasks

The organizational structure may be influenced by the definition of the CAB's legal entity (see Management 6.1.4.1).

6.1.4.5 Verify that the CAB has analyzed the adequacy of the set of regulatory reviewers (including technical experts and team leaders) and personnel to cover all of its activities and to handle the volume of regulatory review work.

Applicable requirements

ISO/IEC 17065:2012 clauses: 6.1.1.1

IMDRF/GRRP WG/N59 clauses: 5.1.3

Guidance

The assessor should verify that the CAB periodically analyzes the needs of the regulatory review program with regards to the number and scope of personnel and their competence, taking into account the current number and profile of medical device manufacturer clients, and; expected changes, the evolution of regulatory review practices/requirements, identified issues necessitating additional resources/competence/expertise, the geographic location of their resources and clients, the time it takes to acquire new competence (in nature or volume), etc.

This analysis is important to ensure the continuity of the CAB's ability to provide regulatory review and certification services within the scope of recognition.

Indicators of inadequate number of regulatory reviewers and personnel may include:

- Overdue regulatory reviews
- Assignment of regulatory reviewers with inadequate competence
- Delay in the issuance of final reports or certification documents to clients, regulatory authorities, or other groups

Typical evidence

Analysis report

6.1.4.6 Verify that the CAB has defined and implemented procedures for the management of impartiality.

Applicable requirements

ISO/IEC 17065:2012 clauses: 5.2

IMDRF/GRRP WG/N59 clauses: 5.2, 6.3.13

IMDRF/GRRP WG/N40 clauses: 6.0

➤ **Sources of threats to impartiality**

Guidance

The CAB must ensure that their decisions are based on objective evidence of conformity obtained during regulatory review activities and are not influenced by other interests or parties.

The assessor should verify that the impartiality and independence of the CAB is established at all levels via:

-
- Structure of the organization and its relationship with superior (parent), peer or subordinate (sister) organizations;
 - The relationship of individuals involved in regulatory review-related activities, including top management;
 - Policies, processes and procedures on regulatory review-related activities.

Threats to impartiality may come from a large number of sources, including:

- Additional services offered, or other activities and interests of the CAB;
- The activities or personal interests of the individuals involved in the regulatory review and decision processes, including external regulatory reviewers and external technical experts;
- The activities of other organizations with whom the CAB has a relationship;
- The CAB's own processes, if they do not properly enable the CAB to identify and mitigate actual conflict of interest or prevent potential conflict of interest;
- The influence that a manufacturer client may have on the CAB;
- The influence that other external factors (for example large tenders, epidemics, shortages) may have on the CAB.
- The remuneration of personnel involved in the regulatory review activities shall not depend on the number or the results of assessments carried out.
- Ownership of the organization (e.g. clients being owners or co-owners);
- Influence on the direction of the organization (e.g. clients being represented on the board).

Typical evidence

Remuneration reports: Income or performance targets, performance reviews, contracts

➤ **Threats to impartiality from consultancy services**

Guidance

In accordance with IMDRF/GRRP WG/N59, a CAB shall not offer or provide any consultancy services to the manufacturer, his authorized representative, a supplier or a commercial competitor as regards to the design, manufacture or construction, marketing, installation, use or maintenance of the product or processes under regulatory review.

A significant threat to the CAB's impartiality comes from the self-review threat arising from the incompatibility of the provision of management system regulatory review and consultancy services, even if the consultancy services are provided by a separate department or even a legally independent entity of the same group of enterprises. In the context of medical device regulatory reviews, medical device regulatory consultancy cannot be offered by the same legal entity providing regulatory review services.

Consultancy includes:

- Quality management system (or good manufacturing practices);
- Medical device marketing and facility registration;
- Medical device adverse events and advisory notices reporting; and
- Company or product specific training.

EXAMPLES:

- Preparing the documentation, or part of it, to be submitted as a marketing submission, with the exception of the testing reports per recognized standard or a specific pre-established protocol.
- Giving specific advice, instructions, or solutions regarding the preparation of documentation to be provided to regulatory authorities to support the marketing of medical devices, or regarding the resolution of any deficiencies identified by regulatory authorities during their marketing review.
- Giving specific advice, instructions or solutions towards the development and implementation of a medical device design validation plan; and
- Acting as Clinical Research Organization for the preparation of a clinical research protocol.

COUNTER-EXAMPLES:

- Testing a device and issuing the corresponding report per a recognized standard or a specific pre-established protocol, as long as the organization does not provide any specific advice, instructions or solutions addressing the deficiencies detected by the testing.
- Acting as a clinical research organization implementing clinical research developed by the manufacturer or another entity separate from the CAB.
- Arranging training and participating as a trainer, including training about regulatory reviews, or exchanging technical or regulatory information is not considered consultancy, provided that, where the course or exchanged information relates to medical device technical or regulatory requirements or to regulatory reviews, it is confined to the provision of generic information that does not provide manufacturer-specific solutions.

Any reference in ISO/IEC 17065:2012 or IMDRF/GRRP WG/N59 to management system consultancy is to be interpreted as medical device regulatory consultancy.

Typical evidence

Organizational structure, website, advertisements, contractual agreements with external resources.

Link with other assessment tasks

See also Measurement, Analysis and Improvement Tasks in 6.3.4.

➤ **Organizational level**

Guidance

As a legal entity, the CAB must analyze the services offered and ensure none of its activities introduces a bias in its regulatory reviews and decisions.

The CAB needs independence (financially and organizationally) from all parties interested in the outcome of regulatory review activities, including the manufacturer under review, its representatives, suppliers, importers, clients, and competitors.

A CAB can offer an accelerated regulatory review timeline as an alternative to the standard process, including accelerated review based on a higher fee or on device-specific factors. However, such accelerated review shall not be predicated on an abridged review process as compared to the standard process, or otherwise influence the final regulatory review decision. This practice is perceived as an inducement and represents a risk to the CAB's ability to conduct the regulatory review under appropriate conditions.

The CAB may receive business by referral, provided the referral does not arise from a relationship with external individuals or organizations having an unacceptable interest in the medical device manufacturers using the CAB's regulatory review and certification services.

Typical evidence

Organizational structure, website, advertisements, fee structure.

➤ **Individual level**

Guidance

Policies, procedures, training and individual commitment to a Code of Conduct (see IMDRF/GRRP WG/N59 Clause 6.1.13) ensure awareness of unacceptable behaviors by individuals involved in the regulatory review and certification processes. The CAB should be aware of potential conflicts of interest affecting all individuals involved in the regulatory review and certification processes and have policies in place to mitigate these.

Any individual employed by a medical device manufacturer potentially being considered as a regulatory reviewer would be viewed by the Regulatory Authorities as a conflict of interest or at least an appearance of conflict of interest, and hence a threat to impartiality that would prohibit that individual from partaking in any medical device regulatory reviews as long as they are also employed by the manufacturer.

Any individual involved in the design or conduct of the testing of the medical device should not be involved in the regulatory review of this device.

Typical evidence

Policies, procedures, training material, personnel file and individual commitment to a Code of Conduct (see IMDRF/GRRP WG/N59 Clause 6.1.13).

➤ **Policies, processes, procedures and practices**

Guidance

The assessor should verify that the CAB has a publicly accessible statement that it understands the importance of impartiality in carrying out its regulatory review and certification decision activities, and that it monitors and addresses any potential or actual conflict of interest.

The CAB's processes and procedures must ensure that any threat to impartiality is identified, documented, analyzed and effectively managed. When an CAB subcontracts parts of the

regulatory review-related activities, processes should be in place to ensure that the use of the external organization does not affect its impartiality.

An CAB that only relies on signed statements from personnel involved in conformity assessment for identifying and monitoring potential conflicts of interests, and does not keep updated records of past and present consultancy activities, would fail (a) to implement an effective system (as no verification would be possible) and (b) to document consultancy activities prior to personnel taking employment, both being requirements of clauses 4.2.2 and 4.2.4 of IMDRF/GRRP WG/N59.

The CAB should have methods in place to prevent the offering of regulatory review services to a medical device manufacturer that (within the previous three years – see IMDRF/GRRP WG/N59 Clause 4.2.3) benefited from medical device consultancy services, including internal audits from the CAB, an employee or external resource.

Policies, processes and procedures must ensure that an individual does not review his or her own work (see ISO/IEC 17065:2012 Clauses 7.5.1 and 7.6.2, and IMDRF/GRRP WG/N59 Clause 5.1.7).

Typical evidence

Documentation of a process for monitoring impartiality at planned intervals.

Evidence of disclosure of any past or present relationship that would potentially represent a conflict of interest.

Link with other assessment tasks

See also Competence Management Task 6.4.4.6.

➤ **Mechanisms for the safeguard of impartiality**

Guidance

The CAB must have mechanisms for safeguarding impartiality. ISO/IEC 17065:2012 provides detailed requirements for managing and safeguarding impartiality. The individuals involved in the process for managing threats on impartiality (see ISO/IEC 17065:2012 clause 4.2) shall have access to individual(s) who have experience and knowledge related to medical devices in order to obtain independent expert opinions. If the CAB chooses to utilize a committee to manage impartiality concerns, this committee should be aware of the specificities of the medical device regulatory scheme.

Typical evidence

The assessors can verify the activity of the impartiality committee (if used by the CAB) by:

- Reviewing the agenda, the minutes or other documents from the meetings of the impartiality committee and activities;
- Checking the participation at the meetings (including the presence of technical or other specific expertise, where necessary), and/or
- Reviewing the files of the committee members, meeting records to determine that the

members were provided with information about the CAB (structure, business, certification process) and the fundamentals of the regulatory review program

If the CAB does not utilize a committee, assessors should review the mechanisms by which potential threats to impartiality were identified, assessed, and mitigated. Assessors should ask for examples of issues that were raised as potential threats to impartiality, how those threats were mitigated, and who made the ultimate decision on the impartiality decision.

Information on safeguarding impartiality is a required input to management review. Assessors can review the information presented on impartiality concerns that were included in management reviews.

Link with other assessment tasks

Threats on impartiality shall be assessed taking into account the definition of the CAB's legal entity (see Management Task 6.1.4.1) and the CAB's organizational structure (see Management Task 6.1.4.4). Impartiality is also a required input to Management Review (see Management 6.1.4.7).

6.1.4.7 Verify that management reviews are being conducted at planned intervals, that they include a review of the suitability and effectiveness of the quality policy, quality objectives, and management system to assure that the quality management system meets all applicable requirements from ISO/IEC 17065:2012 and IMDRF/GRRP WG/N59.

Applicable requirements

ISO/IEC 17065:2012 clauses: 8.5

IMDRF/GRRP WG/N59 clauses: 8.1.3

Guidance

The assessor should verify that the CAB's management review procedure specifies participants, roles and responsibilities, frequency (at least once a year), agenda inputs and deliverables.

The procedure may also specify:

- A standard agenda of topics to be discussed (with flexibility for unique agenda items to be added);
- The necessary attendees who are to participate in the management review and the quorum for decisions;
- The management review objectives, including a review of the progress on meeting the stated objectives,
- How action items resulting from the management review are recorded (including responsibilities and due dates; specifying whether the tracking tool to use, if any) and follow up until completion (including their review during the following management review); and
- The relevant outputs of the Measurement, Analysis & Improvement process, such as corrective and preventive actions.

Changes that could affect the quality management system may include:

- any change to recognition criteria, or
- regulatory requirements applicable to the medical device manufacturers and impacting the CAB's regulatory review program or practices;

The assessor should verify that action items resulting from the management reviews are recorded (including responsibilities and due dates; specifying whether the tracking tool to use, if any) and followed up until completion (including the review of effectiveness during the following management review);

The management review may cover activities outside the scope of the medical device regulatory review scheme. A management review is expected to present, synthesize and analyze sufficient information for the management team to evaluate the implementation, performance, conformity and effectiveness of the activities applicable to the medical device regulatory review scheme.

The outputs of the management review should include decision and action regarding the adequacy of the set of regulatory reviews and personnel to cover all of its activities and to handle the volume of regulatory review work.

Typical evidence

Management review records should document dates, attendees, and results of the management reviews, including a conclusion regarding the suitability, adequacy and effectiveness of the CAB's management system.

Link with other assessment tasks

Inputs to the assessment of the management review should include the analysis of the adequacy of the set of regulatory reviewers (see Management 6.1.4.5), and outcomes from the management of impartiality (see Management 6.1.4.6).

6.2 Process: Use of External Resources

6.2.1 Purpose

The purpose of the Use of External Resources process is to ensure that all activities performed on behalf of the CAB by external regulatory reviewers or technical experts, or external organizations remain under the control of the CAB.

6.2.2 Outcomes

As a result of the assessment of the Use of External Resources process, objective evidence will show whether the CAB has:

- Defined, documented and implemented appropriate methods (i.e. procedures and criteria) for the control of external resources activities, including the control of competency, impartiality and confidentiality.
- Documented and implemented appropriate arrangements with external resources ensuring

that the competency requirements for the regulatory review activities, including the final review and decision-making on conformity to regulatory requirements, are retained by the CAB.

- Established written arrangements with external resources including their commitment to apply the CAB's requirements and provisions ensuring the control of confidentiality and impartiality.
- Adequate competency to review the outcome of activities performed by external resources.

6.2.3 Risks relative to this process

The failure of the Use of External Resources Process poses the following risks:

- Lack of control of activities directly affects the ability of the external resources to provide the expected service; and/or,
- Lack of control by the CAB on the conformity of the external resource activities to the requirements of the recognizing Regulatory Authority.

6.2.4 Assessment Tasks

6.2.4.1 Identify when and how the CAB utilizes external resources. Verify that the controls implemented for the utilization of external resources by the CAB address competence, impartiality, confidentiality and conflict of interest.

Applicable Requirement

ISO/IEC 17065:2012 clauses: 6.2.2

IMDRF/GRRP WG/N59 clauses: 6.2.2, 6.2.3, 6.2.4, 6.2.5, 6.2.6, 6.2.7

Guidance

➤ **General**

The CAB may use external resources, provided it does not delegate any of the following responsibilities outside the CAB's management system:

- Establishment of the contract with the medical device manufacturer;
- Identification of competence requirements for the regulatory reviewer or technical expert to perform specific activities; and,
- Final review and decision-making on conformity to regulatory requirements.

The CAB should ensure that the use of external resources does not compromise its ability to:

- make an independent review and decision on the manufacturer's regulatory conformity; and,
- demonstrate conformity to recognition criteria.

The extent of the use of external resources is an important characteristic of the CAB. The use of external resources poses increased challenges in terms of control of services to the medical device manufacturer, and control of the CAB impartiality and the adherence to the Code of Conduct.

Controls over the use of external resources should cover both the evaluation of the competency of the individual or organization as a resource, and the assignment of a specific regulatory review activity to this external resource.

➤ **External persons**

External resources may be individuals (e.g. contracted regulatory reviewers or technical experts) or organizations (e.g. an CAB recognized under different medical device regulatory review schemes).

The process by which an CAB ensures the suitability of an external regulatory reviewer or an external technical expert typically includes: (1) the evaluation and ongoing monitoring of the individual's competence; (2) training in the CAB's processes and procedures; and, (3) the evaluation of potential threats to impartiality.

➤ **External organization**

An external organization is an organization that does not operate under the CAB's management system.

The process by which an CAB assures the suitability of an external organization typically includes the evaluation of the following considerations:

- Nature and range of the services the external organization is to perform on behalf of the CAB;
- If applicable, the impact of the additional services offered to the client by the external organization (for example: technical consultancy activities);
- Potential conflicts of interests and other threats on the CAB's impartiality, due to, for example:
 - the range of services or products offered by the external organization;
 - the organizational structure, ownership of the external organization; and,
 - the personal interests of the external organization's top management;
- The internal and external human resources available to conduct the activities on behalf of the CAB;
- The infrastructure, including information systems;
- Competence and impartiality of the individuals that the external organization uses to conduct the service for the CAB;
- Procedures by which confidentiality will be maintained.
- Processes implemented by the external organization, and their compatibility with the CAB's processes;
- Ability of the CAB to control and monitor activities undertaken on its behalf by the external organization;
- Access to the records relative to the performance of the service.

The evaluation of this information, including any concerns and their resolution, and the rationale for approving the external organization as a resource should be documented.

The relationship between the CAB and the external organization may be a partnership where both organizations may be responsible for separate regulatory review schemes involving a specific medical device manufacturer. For example, one CAB may act as a CAB for the European Union and the other as CAB for the Japanese market. When this is the case, each organization may make independent decisions on the conformity of the medical device to the relevant regulatory requirements for marketing in the respective geography. The CAB must ensure that the decision made by the external organization does not compromise its ability to make an independent review and decision regarding the conformity of the medical device under review with the relevant regulatory requirements.

On a periodic basis, the CAB should re-evaluate the external organization's ability to satisfy contractual agreements and expectations.

The assessors should verify that the CAB implements documented arrangements (such as a memorandum of understanding, or contractual agreement) with external resources.

Typical evidence

Organizational structure, contractual arrangements with external individuals and external organizations, and competence evaluation records.

Link with other assessment tasks

The evaluation of the competency of external resources includes the identification of potential threats to impartiality (see Management 6.1.4.6).

6.2.4.2 Verify that the CAB has contractual arrangements with external resources.

- **The arrangements shall allow the recognizing Regulatory Authority to assess or witness the activities of the external resources.**
- **The arrangements shall include a commitment by the external resource to apply the CAB's requirements and provisions ensuring the control of confidentiality and impartiality.**

Applicable Requirement

ISO/IEC 17065:2012 clauses: 4.2.7, 6.2.2

IMDRF/GRRP WG/N40 clauses: 6.0

Guidance

The assessors should verify that the contractual arrangements do not enable the delegation to external resources of functions identified in Use of External Resources 6.2.4.1 .

The assessors should verify that the contractual arrangements are comprehensive and adequately implemented.

➤ **External regulatory review and external technical expert**

Since an external regulatory reviewer or external technical expert may have other professional activities (including consultancy activities), the external regulatory reviewer or external technical expert should confirm the absence of any conflict of interest prior to assignment to a particular regulatory review activity.

Contractual arrangements should be documented and approved by the CAB's top management. The CAB should not assign any activity to an external regulatory reviewer or external technical expert before the contractual arrangements are agreed.

➤ **External organization**

Contractual arrangements should be documented and approved by the CAB's top management. The CAB should not assign any activity to the external organization before the contractual arrangements are agreed.

Typical evidence

Contractual arrangements, list of competent personnel that may identify external individuals, list of external organization if available.

6.2.4.3 Verify that the CAB has adequate internal competence to review the outcome and appropriateness of the activities performed by external resources and to verify the validity of the objective evidence provided in order to make decisions.

Applicable Requirement

ISO/IEC 17065:2012 clauses: 6.1.2

IMDRF/GRRP WG/N59 clauses: 6.2.4

Guidance

The confidence of the CAB in the reliability of outsourced regulatory review activities is only achieved if the CAB has sufficient competence internally to direct the regulatory review activities; verify the appropriateness and validity of opinions from external technical experts; verify the competence of the external resources; critically evaluate the outcome of the outsourced activities; and understand the significance of the findings and conclusions.

The absence of such internal competence would result in the CAB relying blindly on the conclusions and recommendations of the external regulatory reviewer, external technical expert, or external organization to make its certification decision. This would be equivalent to delegating the certification decision. Such a delegation is not acceptable as it would not fulfill the requirements of IMDRF/GRRP WG/N59 Clause 7.6.

The assessor should evaluate the extent of expertise expected by an CAB of an external resource and verify that the CAB can demonstrate sufficient internal competence to verify the appropriateness and validity of objective evidence provided by the external resource.

Typical evidence

The assessor may look at the competency file for an assigned individual to ensure experience and suitability can be proven for the assigned responsibility.

6.3 Process: Measurement, Analysis and Improvement

6.3.1 Purpose

The purpose of the Measurement, Analysis and Improvement process is to verify that:

- Information relative to the regulatory reviews, competence of the regulatory reviewers, decisions on conformity to regulatory requirements, and the CAB's management system is collected;
- This information is analysed to identify actual and potential nonconformities;
- Actual and potential nonconformities are investigated; and,
- Effective corrections and corrective actions are taken, as appropriate.

If trends in the information collected above are unfavourable and nonconformities are observed during the assessment, this information can be used to select:

- Regulatory reviewer qualification files to review during the assessment of the Competence Management process;
- Medical device manufacturer files; and,
- Agreement and monitoring records during the assessment of the Use of External Resources process.

6.3.2 Outcomes

As a result of the assessment of the Measurement, Analysis and Improvement process, objective evidence will show whether the CAB has:

- Defined, documented, and implemented procedures for measurement, analysis and improvement that address the requirements of the ISO/IEC 17065:2012 standard and the IMDRF/GRRP WG/N59 documents;
- Identified, analyzed, and monitored appropriate sources of quality data including internal audits, external assessments, and complaints, to identify actual and potential nonconformities;
- Investigated actual and potential nonconformities;
- Implemented corrections, corrective actions and preventive actions, as appropriate; and,
- Reviewed the effectiveness of such actions.

6.3.3 Risks relative to this process

The failure of the Measurement, Analysis and Improvement process poses the following risks:

- Lack of assurance in the CAB's ability to identify and remediate nonconformities and potential nonconformities as necessary; and/or,
- Lack of assurance on the CABs decisions relating to the medical device manufacturer's conformance to regulatory requirements.

6.3.4 Assessment Tasks

6.3.4.1 Verify that the CAB has a defined and documented procedure(s) for measuring, monitoring, analyzing and improving the relevance, compliance, consistent implementation and effectiveness of the CAB’s management system.

Applicable requirements

ISO/IEC 17065:2012 clauses: 8.7

IMDRF/GRRP WG/N59 clauses: Not applicable

Guidance

Assessors should be mindful that while ISO 17065 does not specifically use the terminology “Measurement, Analysis and Improvement”, clause 8.7 of ISO 17065:2012 refers to “corrective actions”. Additionally, most data presented during the management review are outputs of a Measurement, Analysis & Improvement process.

The CAB should have procedures to collect and monitor data relative to:

- Conflicts of interest
- Regulatory reviewer conduct
- Regulatory reviewer competence
- Implementation of the review and certification processes

The CAB may use various methods to collect such data, including the review of regulatory review documentation, solicitation of feedback from manufacturer clients, internal and external audits and assessments, recording unsolicited feedback from manufacturer clients or users of the regulatory review reports or certification documents including those prepared by regulatory authorities.

These procedures should enable the CAB to detect individual nonconformities or potential nonconformities, as well as unfavorable trends.

The assessor should verify that the CAB has procedures to address any nonconformity and potential nonconformity, including the investigation of their cause, and the determination of corrections and corrective actions, as applicable.

Typical evidence

Procedures and resulting records for these processes.

Link with other assessment tasks

The monitoring, analysis and improvement processes provide input to the management review (see Management 6.1.4.7)

6.3.4.2 Determine if appropriate sources of data and processes have been monitored by the CAB, to identify actual and potential nonconformities. This data must include internal audits, external assessments, complaints, and the use of external resources.

Confirm that monitoring and measurement activities cover regulatory reviewer competence, regulatory review performance, decisions on conformity to regulatory requirements and adherence to the Code of Conduct throughout the Competence Management and Regulatory Review and Decisions Processes.

Applicable requirements

ISO/IEC 17065:2012 clauses: 8.1.3, 8.7

IMDRF GRRP WG/N59 clauses: 6.1.13, 8.7, 8.8

➤ **Data sources**

Guidance

It is the CAB's responsibility to determine appropriate monitoring and analysis activities.

The data sources should at least include:

- Complaints;
- Nonconformities from internal or external audits, and other sources;
- Appeals;
- Competence and conduct of the technical experts, regulatory reviewers and other personnel;
- Performance of the regulatory reviews according to planned arrangements;
- Corrective actions.

The assessor should be mindful of quality problems that appear in more than one data source. It is essential that the CAB understands the full extent of the quality problem. For example, nonconformities noted in complaints or customer feedback should be compared with similar nonconformities noted during the organization's analysis of data from other data sources such as regulatory reviewer competence assessment reports, regulatory review records, internal audit reports, etc.

Typical evidence

See list above

➤ **Analysis of data**

Guidance

The CAB has the flexibility to use whatever methods of analysis are appropriate to identify existing and potential causes of nonconformities or other quality problems. However, the CAB should use appropriate statistical methods where necessary to detect potential, emerging or recurring quality problems. The CAB should not use statistics to minimize a problem or avoid addressing a problem.

Typical evidence

Records resulting from the processes. Additional record on the analysis of the data.

6.3.4.3 Determine if investigations are conducted to identify the underlying cause(s) of detected nonconformities as well as of potential nonconformities, where possible.

Confirm investigations are commensurate with the risk of the nonconformity.

Confirm that corrections, corrective actions, and preventive actions, as appropriate, were determined, implemented, documented, effective, and did not adversely affect the regulatory reviews performed and decisions made.

Evaluate whether corrective action is appropriate to the risk of the nonconformities or potential nonconformities encountered.

Applicable requirements

ISO/IEC 17065:2012 clauses: 8.7, 8.8

IMDRF/GRRP WG/N59 clauses: 7.12.1, 8.7, 8.8

Guidance

The assessor should verify that the CAB's procedures ensure that data to detect existing or potential nonconformities are analyzed and effectively reacted to when applicable.

When the CAB detects a nonconformity, it must investigate, determine and record:

- The underlying causes of the nonconformity;
- Any necessary correction to control or limit the effects of the nonconformity; and
- Any necessary corrective action to prevent the re-occurrence of the nonconformity.

Potential nonconformities do not need correction; however the CAB must still investigate, determine and record:

- The underlying causes of the potential nonconformity; and
- Any necessary preventive action to prevent the nonconformity from occurring.

The depth of the CAB's investigation of the quality problem should be commensurate with the risk. An assessment team should be mindful of the risk of the nonconformity on the reliability of the regulatory reviews and the credibility of the decisions made by the CAB.

Considering the nature of the services offered by CABs, the investigation conclusion of a nonconformity's underlying cause should not be limited to "human error", in particular if there is pattern of such human errors. The assessor should verify that the CAB evaluates whether such human error originates from a lack of (or ineffective) training, insufficient competency, poor practices, or other causes (e.g. a lack of effective supervision).

The investigation of a nonconformity should include a determination of whether the nonconformity adversely affects certification documents or regulatory review deliverables already released to the client or any Regulatory Authority.

A nonconformity or potential nonconformity may not always warrant correction, corrective, and preventive action.

Where a quality problem has already been identified and investigated by the CAB, and the CAB had decided not to undertake any corrective actions, the assessor should verify that records include a risk-based rationale for not taking action, and be approved by a designated individual.

The CAB is expected to implement in a timely manner the actions it decided to address an existing or potential nonconformity, including correction, corrective action, and/or preventive action. The time to implement these actions – especially the immediate correction intended to limit the effects of the nonconformity - should be inversely related to the risk of the nonconformity. The extensive nature of some actions – corrective and preventive actions in particular – may necessitate extended time to implement on the part of the CAB.

The assessor should verify that the CAB evaluates the effectiveness of any implemented corrective or preventive action. These actions should not be considered complete until this evaluation has been conducted and the actions have been confirmed to be effective. If the CAB determines that a correction, corrective action, or preventive action was not effective, the assessor should verify that the CAB further investigates how to remediate the original problem, and, as appropriate, the causes that prevented the actions from being effective.

Typical evidence

Records resulting from correction, corrective actions, and preventive actions.

Link with other assessment tasks

The output of the corrective and preventive actions is an input to management review (see Management 6.1.4.7).

6.3.4.4 Determine whether any of the CAB's corrective actions require reporting to the recognizing Regulatory Authorities (such reporting may include changes relevant to its recognition).

Applicable requirements

ISO/IEC 17065:2012 clauses: Not applicable

IMDRF/GRRP WG/N59 clauses: 9.0

Guidance

The assessor should verify that the CAB reports to the recognizing Regulatory Authority(s) if a corrective action represents a change that may affect the organization's recognition (e.g. legal, commercial, organizational or ownership status; top management or key personnel; resources; or premises and critical location) or its operating processes (e.g., policies and procedures submitted to the recognizing Regulatory Authority in the application package for recognition as a CAB).

Typical evidence

Records of corrective action, competence record, record of organizational structure

6.3.4.5 Verify that a process is in place to ensure that a regulatory review that does not conform to regulatory reviewing requirements is identified and managed to ensure

that subsequent decisions on conformity to regulatory requirements are based on sufficient information.

Confirm that appropriate decisions were made, justified, and documented.

Applicable requirements

ISO/IEC 17065:2012 clauses: 7.7, 8.7

IMDRF/GRRP WG/N59 clauses: 7.12.1

Guidance

If the CAB determines as part of the final review that the prerequisite information or method taken for making a decision of conformity to regulatory reviewing requirements are incomplete or contain error, the assessor should verify that a nonconformity is recorded and resolved prior to the making of a decision.

The resolution of the CAB's nonconformity may require revisions to the regulatory review documentation, which may necessitate requesting and reviewing new information from the manufacturer. In addition, re-training of regulatory reviewers or technical experts may be necessary to reduce the possibility of future nonconformities.

Typical evidence

Client files, record of the review of regulatory review decisions, if available.

6.3.4.6 Confirm that when a nonconformity is detected after the decision of conformity to regulatory requirements, appropriate action is taken commensurate with the risk, or potential risks, of the nonconformity.

Confirm appropriate notification to the relevant Regulatory Authority was made.

Applicable requirements

ISO/IEC 17065:2015 clauses: 8.7

IMDRF/GRRP WG/N59 clauses: 7.12.1, 9.0

Guidance

If a nonconformity affecting a regulatory review or the decision regarding the regulatory conformity of a medical device is observed after this decision has been shared with the recognizing Regulatory Authority(s), the CAB should determine if an amendment to the regulatory review report or the decision is necessary.

If the CAB decides to amend the regulatory review report, the decision on the manufacturer's regulatory conformity, or any other information shared with the recognizing Regulatory Authority(s), it should inform the recognizing Regulatory Authority(s) and the manufacturer of the change, and the reason for the change (i.e. the nonconformity).

A modification of the decision on a manufacturer's regulatory conformity may include the suspension or withdrawal of certification documents.

The communication between the CAB and the recognizing Regulatory Authority(s) should enable the Regulatory Authority to evaluate the impact of the nonconformity on regulatory actions undertaken based on the regulatory review information initially provided by the CAB. This could affect marketing authorizations, as well as regulatory actions.

Typical evidence

Internal audits, complaints

6.3.4.7 Verify that internal audits are being conducted according to planned arrangements and documented procedures to ensure the management system is in compliance with the established requirements set out in ISO/IEC 17065:2012 and the IMDRF/GRRP WG/N59 documents, as well as any other applicable recognizing Regulatory Authority requirements.

Confirm the internal audits include provisions for auditor independence over the areas being audited, corrections, corrective actions, follow-up activities, and the verification of corrective actions.

Applicable requirements

ISO/IEC 17065:2012 clauses: 8.6

IMDRF/GRRP WG/N59 clauses: 8.1.4, 8.6

Guidance

The CAB must conduct periodic, independent and systematic examination of its management system to determine whether:

- The management system as defined, meets all applicable requirements;
- The CAB conducts its activities according to the management system;
- The management system as implemented, produces the expected deliverables and outcomes, and is suitable to achieve the CAB's quality objectives.

Internal audits may not be specific to a medical device regulatory review scheme but the internal audit program should demonstrate sufficient coverage of this scheme. At a minimum, the entire medical device regulatory review scheme is to be covered within the duration of the recognition cycle.

Typical evidence

The records should demonstrate that the CAB implemented the internal audits according to the internal audit program (including its schedule).

6.3.4.8 Confirm that the CAB has effective processes for handling complaints, and investigating the cause of nonconformities related to complaints with provision for input into the Measurement, Analysis and Improvement process.

Verify that procedures have been implemented that require the CAB to forward to the recognizing Regulatory Authority information on any complaint about a

medical device manufacturer that could indicate an issue related to the safety and effectiveness of medical devices or a public health risk.

Confirm the proper and timely implementation of these procedures.

Evaluate how the complaint process allows for forwarding to the appeals process.

Applicable requirements

ISO/IEC 17065:2012 clauses: 7.13

IMDRF/GRRP WG/N59 clauses: 7.13

Guidance

The assessors should verify that the complaint handling process includes:

- Any feedback from a manufacturer client or from users of the certification documents, including Regulatory Authorities, alleging that the CAB did not fulfill all applicable requirements for recognition (i.e. from IMDRF/GRRP WG/N59, ISO/IEC 17065:2012, or any additional requirement specific to the medical device regulatory review scheme); and,
- Any feedback from a user of the certification documents, including Regulatory Authorities, alleging that the reviewed devices from the manufacturer do not meet their specifications, or that the manufacturer fails to satisfy its quality system and regulatory obligations.

The CAB may receive feedback through different channels. A complaint may result from broader feedback, and may not be designated by the sender as a complaint. For example, the appeal of an CAB decision should be supported by a rationale for reconsidering a decision on a manufacturer’s conformity. This rationale may include a statement that the CAB did not fulfill its obligations, which may be handled similarly to a complaint.

The assessor should verify that when communicating with a complainant other than the recognizing Regulatory Authority, the CAB does not share confidential information about any third party.

Typical evidence

Complaint handling records

Link with other assessment tasks

The determination of the complaint validity may be part of the investigation of the nonconformity (See Measurement, Analysis and Improvement 6.3.4.9).

6.3.4.9 Where an investigation by the CAB determines that activities from external resources contributed to a nonconformity or a complaint, verify that records show that relevant information was exchanged between the parties involved.

Applicable Requirements

ISO/IEC 17021-1:2015 clauses: 7.13

IMDRF/GRRP WG/N59 clauses: Not applicable

Guidance

External resources may be essential to the ability of the CAB to conduct many types of regulatory review activities. By nature, external resources are not controlled as directly as internal resources, which introduces an increased risk factor.

When an external resource contributed to a nonconformity or a complaint, the assessor should verify that the CAB has made the external organization aware of the nonconformity or complaint.

The assessor should ensure that the CAB has requested information from the external organization regarding the implementation of remediation actions.

Typical evidence

Records of correction, corrective action or complaints

6.3.4.10 Determine if the relevant outputs of the Measurement, Analysis and Improvement Process are inputs into the management review.

Applicable Requirements

ISO/IEC 17065:2012 clauses: 8.5

IMDRF/GRRP WG/N59 clauses: Not applicable

Guidance

The assessor should ensure that the CAB uses relevant outputs from the Measurement, Analysis and Improvement process as inputs to management review.

Typical evidence

Records of management review.

Link with other assessment tasks

See Management 6.1.4.7 regarding management review.

6.4 Process: Competence Management

6.4.1 Purpose

The purpose of the Competence Management process is to ensure that regulatory reviewers, technical experts, the program administrator, and all other personnel involved in the regulatory review and related activities have demonstrated competence, according to pre-established criteria. The Competence Management Process is also to ensure that the CAB has access to competent personnel to cover the scope of their recognition. This is essential in ensuring the credibility of the Regulatory Review and Decision Process outcomes.

6.4.2 Outcomes

As a result of the assessment of the Competence Management process, objective evidence will show whether the CAB has:

- Identified the necessary competence to be an effective organization for their scope of recognition.
- Defined, documented and implemented methods (i.e. procedures and criteria) for the evaluation and monitoring of the competence of regulatory reviewers, technical experts, and the program administrator, and all other personnel involved in the management and performance of regulatory review and related activities.
- Identified training needs and access to training for regulatory reviewers, technical experts, and the program administrator, and all other personnel involved in the management and performance of regulatory reviews and related activities.
- Maintained records demonstrating the effective implementation of the competence management process.
- Demonstrated the effectiveness of its evaluation methods and of the overall competence management process.

6.4.3 Risks relative to this process

The failure of the Competence Management process poses the following risks:

- Lack of competence may not allow the regulatory reviewers, technical experts, and program administrator to identify the critical elements to assess, make appropriate judgement on conformity to regulatory requirements and make appropriate decisions.

6.4.4 Assessment Tasks

6.4.4.1 Verify that the CAB has identified the necessary competencies for the scope of its recognition.

Verify that the CAB has access to the necessary technical expertise for advice on matters directly relating to decisions of conformity to regulatory requirements.

Applicable Requirement

ISO/IEC 17065:2012 clauses: 6.1.1.2, 6.1.2, 7.3.1

IMDRF/GRRP WG/N59 clauses: 6.1, 6.2.3, 7.3.2

IMDRF/GRRP WG/N40 clauses: 5.0

Guidance

➤ **Competence needs for the organization**

The assessor should verify the following:

- The CAB should identify the competence needed at all levels of the organization and for all functions involved in regulatory review-related activities, to operate as a recognized CAB.

- The CAB should use expert opinions to identify these competencies. Such experts may be internal or external. The necessary competence may vary depending on the range of technical areas for which the CAB seeks recognition, and on the number and profile of medical device manufacturer clients and their medical devices.
- The CAB should have an appropriate workforce, in competence and number, to operate as an CAB.
- If the CAB has several sites with separate organizational structures, the same competence criteria are consistently applied to all sites.

➤ **Identifying Competence criteria**

The assessor should verify that the documented process allows the CAB to:

- Determine the requirements that should be met as part of each regulatory review, and ensure that conformity to these requirements has been demonstrated. This assessment should consider each area of technical knowledge for which the CAB is seeking recognition.
- Document competency criteria expressed in terms of the requisite knowledge, skills, behavior, values and experience that will ensure requirements are adequately assessed. Criteria may also include an ability to analyze and adapt to new situations. The criteria should allow for an objective and measurable assessment of competency. (IMDRF/GRRP WG/N40 Section 7 provides an example of a scheme for the classification of foundational knowledge)
- Maintain the competence criteria.

The IMDRF/GRRP WG/N40 Sections 8 and 9 specify pre-requisite education and experience for regulatory reviewers and technical experts.

Some competence criteria may apply to all technical areas (horizontal criteria). For example, all medical device regulatory reviewers should have demonstrated competence in medical device regulations, quality management systems, and risk management applied to medical devices.

Conversely, competence criteria may only apply to specific technical areas (vertical criteria). For example, not all medical device regulatory reviewers need to have competence in the safety of electrical medical devices or software.

If the CAB excludes some technical areas from its application to the recognizing Regulatory Authority(s), the CAB would not be expected to have competent regulatory reviewers for these technical areas. The CAB must not commit to undertake the assessment of products where it does not have the requisite competence under its scope of recognition.

For each regulatory review function, the CAB should identify the criteria that may be used to demonstrate competence, prior to the assessment of competence against the criteria.

➤ **Technical and regulatory expertise**

The assessor should verify that the CAB has access to sufficient technical expertise necessary for the scope of its regulatory review-related activities (e.g. medical devices reviewed, their performance and safety, clinical use, manufacture, and the regulations applicable to those devices).

The necessary expertise should serve the following purposes:

- Provide guidance while defining appropriate regulatory review and certification practices and processes;
- Provide guidance during the development of the CAB's management system to ensure compliance to the recognition requirements;
- Define necessary competence criteria and to train individuals involved in the regulatory review and certification activities;
- Support the regulatory reviewers when facing challenging issues during a regulatory review; and
- Enable the CAB to critically review technical documentation, request additional information from the manufacturer when needed, and review this additional information.

While defining regulatory review and certification practices and processes, and the CAB management system, the CAB should consider guidance documents that are acceptable to Regulatory Authorities.

➤ **Using external resources to meet the scope of expertise**

The outcome of the identification of competence needs should serve as an input to the selection of an external resource and to define operational processes between the CAB and the external resource.

Typical evidence

Competence management procedures and criteria

Link with other assessment tasks

See Management 6.1.4.5 (analysis of the adequacy of the set of regulatory reviewers) and Use of External Resources 6.2.4.3 (internal resources necessary to verify the work of external resources)

6.4.4.2 Verify that the CAB has defined, documented and implemented procedures and criteria for initial competence evaluation of regulatory reviewers, technical experts, program administrators, and all other personnel involved in regulatory review-related activities.

Applicable Requirement

ISO/IEC 17065:2012 clauses: 6.1.2

IMDRF/GRRP WG/N59 clauses: 6.1.3

IMDRF/GRRP WG/N40 clauses: 10.1

Guidance

➤ **Competence evaluation criteria**

Compliance with competency criteria may be demonstrated by an individual (or organization) through a combination of practical and theoretical knowledge, skills, behavior and values that are used to act effectively in regulatory review activities.

➤ **Competence evaluation process**

The assessor should verify that the CAB has a defined process for the initial evaluation of the competence of a candidate regulatory reviewer, technical expert, or any other individual involved in regulatory review and decision activities.

Competence cannot strictly be confirmed through a document review. The evaluation process should consider various methods to initially evaluate the individual's competence, using a combination of the following:

- Review of records of education and training;
- Review of records of regulatory reviews conducted, if relevant to the function;
- Review of evidence of technical expertise (for example, involvement in medical device design or testing, publications), if relevant to the function;
- Feedback from peers, and supervisors, and if relevant, from manufacturers whose medical devices were reviewed;
- Interviews; and
- Evaluation against competency criteria, e.g. testing.

The assessor should verify that the individual(s) involved in the evaluation of competence should themselves possess the necessary competence to do so effectively. Specifically, the individual(s) involved in the evaluation of the competence of regulatory reviews or technical experts should meet the competence criteria of a regulatory reviewer with adequate education, skill and experience.

Before undertaking independent regulatory reviews, each regulatory reviewer must undergo a confirmation of skills and personal attributes through the CAB's assessment of their regulatory reviews in accordance with IMDRF GRRP WG N40 Section 12.

Assessors may find that an effective way to assess regulatory reviewer competence is to select regulatory reviewers during the marketing review assessment (MRA) portion of the assessment. As the assessors are reviewing the regulatory review documentation, those regulatory reviewers can be selected and evaluated for the required technical competency to do the regulatory review.

Note that the CAB may define different degrees of regulatory reviewer competence, using designations such as regulatory reviewer, lead regulatory reviewer, senior regulatory reviewer, or supervising regulatory reviewer. If applicable, the CAB should define the competence criteria for each of these designations, as well as determining competency criteria for different technical areas (e.g. sterilization processes, electronic devices, devices containing nanomaterials, etc.).

Typical evidence:

Procedure for the initial evaluation of competence, and related records

6.4.4.3 Verify that the CAB maintains records of personnel to include regulatory reviewers, technical experts, and the program administrator that have been assessed as competent to perform the duties associated with the regulatory review and related activities, including external resources.

Verify that the records are current at all times.

Applicable Requirement

ISO/IEC 17065:2012 clauses: 6.1.2.2

IMDRF/GRRP WG/N59 clauses: 6.1.1

IMDRF/GRRP WG/N40 clauses: 13.0

Guidance

The assessor should verify that:

- These records are available and current for all personnel.
- The CAB has implemented the scheme for the classification of technical knowledge if prescribed by the recognizing Regulatory Authority.

Typical evidence

List of competent personnel

Link to other assessment tasks

The list must include external resources (See Use of External Resources 6.2.4.1).

6.4.4.4 Verify that the CAB has identified training needs, has provided access to such training, and has ensured the identified training has been undertaken by its regulatory reviewers, technical experts, the program administrator, and all other personnel involved in the regulatory reviews and related activities, including the external resources. Training shall include IMDRF-specific requirements.

The CAB must ensure that personnel have access to an up-to-date set of procedures.

Applicable Requirement

ISO/IEC 17065:2012 clauses: 6.1.2.1, 6.1.2.2

IMDRF/GRRP WG/N59 clauses: 6.1.1, 6.1.3, 6.1.5, 6.1.6

IMDRF/GRRP WG/N40 clauses: 10.0

Guidance

The assessor should verify that as a result of either the evaluation of an individual's competence, the recruitment of new personnel (including regulatory reviewers, technical experts, or program administrators), or the evaluation of the adequacy of the set of regulatory reviewers, technical experts and personnel with respect to the organization needs, the CAB made arrangements to complement the competence of the individual or the organization with additional training.

Training arrangements should ensure that:

- Any gaps identified in the competence evaluation are resolved;
- Any needs for future professional development are identified; and
- The training is effective, for example through knowledge tests, examinations, review of work by a tutor or supervisor, observation of regulatory reviews, interviews, etc.

Typical evidence

Training plans, job-specific predefined training curriculum, etc. are examples of documented arrangement.

6.4.4.5 Verify that the CAB has defined, documented and implemented a method (i.e. procedures and criteria) for the ongoing monitoring of competence and performance of all personnel involved in regulatory reviews and related activities.

Verify that when personnel no longer meet the competence criteria, their competence status is revised.

Verify if any remediation plan has been implemented.

Applicable Requirement

ISO/IEC 17021-1:2015 clauses: 6.1.2

IMDRF/GRRP WG/N59 clauses: 6.1.10

IMDRF/GRRP WG/N40 clauses: 11.0, 14.0

Guidance

➤ **Monitoring of the competence**

The assessor should verify that the CAB has defined methods and criteria for the ongoing monitoring of the competence of personnel according to documented procedures.

Regulatory reviewers must undergo confirmation of skills and personal attributes through the CAB's assessment of their regulatory reviews in accordance with IMDRF GRRP WG N40 Section 11 every year.

The monitoring should be adapted to the expected level of competence, and to the potential impact of the lack of competence of the individual(s).

The assessor should verify that if the CAB identifies concerns that relate to a lack of competence of a regulatory reviewer(s) or a technical expert(s), the CAB documents the concern. The procedures should specify how these concerns should be recorded and handled (e.g. through the corrective action process).

➤ **Response to the outcomes of the competence monitoring activities**

The assessor should verify that the outcome of the competence monitoring activities is a decision on whether to renew the recognition of competence of personnel.

The decision may be either to renew the recognition of competence or to place the individual into remediation.

The assessor should verify that the CAB adjusts the monitoring methods and training arrangements of a particular individual that has been placed in remediation. For example, the monitoring methods may be changed to monitor the improvement of a particular competency.

The work performed by an individual that has been placed in remediation should be evaluated by the CAB to ensure its validity. If the outcomes of a regulatory review performed by an individual that has subsequently been placed in remediation (i.e. the regulatory review documentation and the decision on the medical device's conformity) should be invalidated, the CAB should record it as a nonconformity and inform the recognizing Regulatory Authority(s) and affected manufacturers of the situation and the remediation plan.

Typical evidence

Competence re-evaluation records, regulatory review documentation

Link with other assessment tasks

The competence monitoring process is a source of quality data for the Measuring, Analysis and Improvement process (see Measurement, Analysis and Improvement 6.3.4.1 and 6.3.4.2)

Decision on the status of recognition of an assessor may impact the records of available qualified regulatory reviewers (See Competence Management 6.4.4.3).

6.4.4.6 Verify that records demonstrate the implementation of the competence evaluation, training, commitments to confidentiality, impartiality, and Code of Conduct for regulatory reviewers, technical experts, the program administrator, and all other personnel involved in the regulatory reviews and related activities.

Applicable Requirement

ISO/IEC 17065:2012 clauses: 6.1.2.2

IMDRF/GRRP WG/N59 clauses: 6.1.13

IMDRF/GRRP WG/N40 clauses: 13.0

Guidance

The assessors should verify records of initial and ongoing competence evaluation as well as training records. These files should include external regulatory reviewers and external technical experts, including those used by external organizations.

When assessing the CAB, the recognizing Regulatory Authority's assessment team should select a representative sample of individual files, with a preference for regulatory reviewers and technical experts, including both internal personnel and external resources. The completion of previous assessment tasks may direct the selection to specific functions or individuals.

The CAB must maintain a list of regulatory reviewers and technical experts. The list is to be reviewed annually and updated as necessary. During the assessment, the assessment team should review this list and ensure that it is complete and up-to-date.

Typical evidence
Individual files

Link with other assessment task
See Management Task 6.1.4.6 regarding commitment to impartiality.

6.4.4.7 Verify that the CAB has demonstrated the effectiveness of the competence evaluation methods and of the competence management process.

Applicable Requirement

ISO/IEC 17065:2012 clauses: 6.1.2.1

IMDRF/GRRP WG/N59 clauses: 6.1.10

IMDRF/GRRP WG/N40 clauses: 11.0

Guidance

Demonstrating the effectiveness of the competence evaluation methods is intrinsically difficult for both the CAB and the recognizing Regulatory Authority's assessment team. However, if the CAB or the recognizing Regulatory Authority's assessment team identifies a lack of competence of the CAB or of an individual, this may reflect a lack of the effectiveness of the competence evaluation methods and competence management process.

Typical evidence
Records on regulatory reviews, internal audits, records of client feedback

Link with other assessment tasks
The individual's file includes information relevant to the assignment of position, including responsibilities and authorities (see Management 6.1.4.4), and to the management of impartiality (see Management 6.1.4.6)

6.5 Process: Regulatory Review and Decisions Process

6.5.1 Purpose

The purpose of the Regulatory Review and Decisions Process is to control the management of the medical device manufacturer's request for regulatory review and other related activities. This process includes the review of the marketing submission, the definition of the regulatory review program, the planning and performance of the regulatory review, the decision-making, and the review of the regulatory review program.

6.5.2 Outcomes

As a result of the assessment of the Regulatory Review and Decisions Process, objective evidence will show whether the CAB has:

- Defined, documented and implemented methods (i.e. procedures and criteria) for the control of the Regulatory Review and Decisions process.
- Established and implemented regulatory review processes for specific medical device types in accordance with the prescribed recognizing Regulatory Authority requirements.
- Planned and conducted regulatory reviews according to the regulatory review program, including the assignment of a competent regulatory review team.
- Reviewed additional information provided by the manufacturer in response to deficiencies observed during regulatory reviews.
- Made reliable and consistent decisions based on the outcome of the regulatory reviews and the review of the manufacturers' responses.
- Conducted follow-up activities according to the decisions.
- Effectively evaluated and made appropriate decision regarding appeals.
- Maintained records demonstrating the effective implementation of the Regulatory Review and Decisions process.

6.5.3 Risks relative to this process

The failure of the Regulatory Review and Decisions Process poses the following risks:

- Lack of control regarding the Regulatory Review and Decisions Process may cause inconsistency in the outcome and affect the reliability of the outputs of the CAB.

6.5.4 Assessment Tasks

6.5.4.1 Verify that the CAB has documented procedures as required in the IMDRF/GRRP WG/N59 for clause 7 of the ISO/IEC 17065:2012.

Applicable Requirement

ISO/IEC 17065:2012 clauses: 7.0

IMDRF/GRRP WG/N59 clauses: 7.0

Guidance

The assessor should verify that any specific requirements for the regulatory review of technical documentation or any other requirement that has been prescribed by a Regulatory Authority has been incorporated by the CAB's procedures for their regulatory review and certification processes.

Typical evidence

Review procedures (see IMDRF/GRRP WG/N59 Clause 7.0)

6.5.4.2 Verify that the CAB established, reviewed and updated (as needed) regulatory review processes specific to each medical device type the CAB is recognized to review.

Verify that the CAB has conducted the regulatory reviews according to these processes, including the incorporation of relevant regulatory requirements and IMDRF principles.

Applicable Requirement

ISO/IEC 17065:2012 clauses: 7.0

IMDRF/GRRP WG/N59 clauses: 7.0, 7.12.1

Guidance

The assessor should verify that the CAB has established a regulatory review process for each medical device type they are recognized to review.

The assessor should in particular verify that the CAB takes into account considerations such as:

- The need for GMP certification in a given regulatory jurisdiction;
- The scope of marketing certification to ensure that it adequately reflects the intended use of the device and any specific regulatory requirements in the jurisdiction where marketing certification is sought; and
- Device-specific considerations impacting the regulatory review such as the medical device classification, manufacturing processes, software, the presence of substances of human or animal origin or medicinal substances.

The assessor should verify that the CAB reviews and revises the regulatory review processes as necessary when new information about medical devices subject to regulatory review becomes available to the CAB. Such information could include changes to regulatory requirements, directives from regulatory authorities, changes to relevant standards, newly available safety information.

Typical evidence

Sample of specific regulatory review procedures, client files

6.5.4.3 Verify that the CAB selected and assigned regulatory review teams with the competence required for each regulatory review.

Verify that the CAB communicated to the regulatory review teams the desired scope of marketing certification, objectives and tasks for planning the regulatory review and for the assignment of responsibilities among the regulatory review team members.

Applicable Requirement

ISO/IEC 17065:2012 clauses: 7.3, 7.4, 7.5, 7.6

IMDRF/GRRP WG/N59 clauses: 7.2, 7.3

Guidance

The assessor should verify that the CAB has a procedure for the selection of regulatory review team members that ensures the regulatory review team possesses the competence necessary to conduct a specific regulatory review of the medical device, taking into account the scope of marketing certification sought and in accordance with the medical device regulatory review scheme.

This task can often be efficiently assessed by selecting regulatory review files for auditing and confirming that the regulatory review scope and objectives were correct and agreed upon between the CAB and the client, the regulatory review team that was selected has all the required technical competency, and that the regulatory review process was followed.

Typical evidence

Client files

Link with other assessment tasks

See management of impartiality in Management Task 6.1.4.6

6.5.4.4 Verify that the CAB conducted regulatory reviews according to the regulatory review program and the requirements of the recognizing Regulatory Authority.

Verify that the requirements for regulatory review reports, including the identification and communication of any deficiencies observed in the technical documentation, and any requirements of the recognizing Regulatory Authority were met.

<p>Applicable Requirement</p>

<p>ISO/IEC 17065:2012 clauses: 7.3, 7.4, 7.5, 7.6, 7.7</p>
--

<p>IMDRF/GRRP WG/N59 clauses: 7.2, 7.3, 7.4, 7.5, 7.6, 7.7</p>
--

Guidance

The assessor should verify that the regulatory review program has been implemented as planned and if regulatory reviews were delayed or not performed, that the CAB has provided a rationale or taken measures to rectify the problem.

The assessor should verify that the CAB has followed relevant IMDRF principles for conformity assessment when conducting regulatory reviews of medical devices.

The assessor should select a sample of regulatory review files to audit their content. The sampling should take into account:

- The outcome of their assessment of prior processes (e.g. Management, Measurement, Analysis & Improvement and Competence Management processes);
- The outcomes of previous assessments of the CAB;
- The class and type of the device under review;
- Postmarket information (e.g. recalls);
- Different type of regulatory reviews (e.g. initial marketing certification, changes in

- certification scope or device design/use);
- Different regulatory jurisdictions; and
- Various regulatory reviewers.

Typical evidence

Regulatory review documentation

6.5.4.5 Verify that the CAB reviewed any responses to deficiencies identified during a medical device regulatory review.

Verify that the CAB has verified the sufficiency of any information requested from the manufacturer as part of the regulatory review process.

Applicable Requirement

ISO/IEC 17065:2012 clauses: 7.4.6, 7.4.7, 7.4.8

IMDRF/GRRP WG/N59 clauses: 7.12.1

No additional guidance

Typical evidence

Regulatory review documentation

Link with other assessment tasks

See Regulatory Review and Decision Process 6.5.4.4

6.5.4.6 Verify that the CAB ensures consistent application of regulatory review procedures and decision-making

Verify that the decisions made for suspending, withdrawing, or reducing the scope of any certification is consistent with the recognizing Regulatory Authority's requirements.

Applicable Requirement

ISO/IEC 17065:2012 clauses: 7.6, 7.7, 7.10

MDRF GRRP WG/N59 clauses: 7.6, 7.7, 7.11, 7.12.1

Guidance

➤ **Review of the technical documentation**

The assessor should verify that any deficiencies identified during the regulatory review were relevant to the scope of desired marketing certification and supported by evidence, and that this review is documented.

➤ **Decision on the manufacturer's regulatory conformity**

If the decision is made by a committee, this does not necessarily prohibit the regulatory reviewer(s) from participating in committee meetings, provided the rules governing the committee ensure the overall independence of the committee.

The assessor should evaluate on the basis of a sample of files, whether the CAB ensures the consistency and accuracy of the certification decisions made.

The assessor should verify that the CAB ensures that marketing certification is only granted after the regulatory review process is completed.

Assessors should be mindful that IMDRF/GRRP WG/N59 clause ? requires that the CAB notify the recognizing Regulatory Authority(s) in writing within 5 working days from the date of a decision to refuse, suspend, reinstate, restrict, or withdraw a certificate. The notification shall include a rationale for such action.

Typical evidence
Client files

6.5.4.7 Verify that the CAB communicated the certification decisions and conducted any associated follow-up duties as appropriate, including communication with the manufacturer or Regulatory Authorities.

<p>Applicable Requirement ISO/IEC 17065:2012 clauses: 7.7, 7.11, 7.12 IMDRF/GRRP WG/N59 clauses: 7.6, 7.7, 9.0</p>

Guidance

The assessor should verify that the CAB's follow-up activities, including communication of certification decisions, are conducted to fulfill specified objectives, according to a specified timeline, and by individuals with the necessary competence.

The assessor should verify that the CAB communicates in a timely manner with the relevant recognizing Regulatory Authority(s) in case of a decision to request a restriction, suspension, or withdrawal of marketing certification, or to communicate any other concerns as discussed in IMDRF/GRRP WG/N59.

Typical evidence
Client files

6.5.4.8 Verify that the CAB ensured that any follow-up activities required by manufacturers as part of the regulatory review process were completed as appropriate.

<p>Applicable Requirement ISO/IEC 17065:2012 clauses: 7.9 IMDRF/GRRP WG/N59 clauses: 7.6</p>

Guidance

The assessor should verify that in cases where the manufacturer is required to follow up with the CAB after a certification decision has been made, these duties were fulfilled with appropriate timeliness. Examples of such activities can include medical device stability reports or postmarket safety information required by the relevant regulatory review scheme.

Typical evidence

Client files, regulatory review procedures

6.5.4.9 Verify that the CAB evaluated and made decisions on appeals.

Verify that appeals are input to the Measurement, Analysis and Improvement process.

Applicable Requirement

ISO/IEC 17065:2012 clauses: 7.13

IMDRF/GRRP WG/N59 clauses: 7.13, 8.0

Guidance

The assessor should verify that the CAB’s process ensures a fair review of the request, taking into account internal jurisprudence, and should prevent any pressure on the decision-makers that could impact their independence.

The assessor should verify that the CAB investigates appeals as potential indicators of the need for improvement through the Measurement, Analysis & Improvement process.

The assessor should verify correction and corrective action if appropriate has been taken by the CAB.

Trends on appeal decisions may reveal signs of lack of independence.

Typical evidence

Records of appeal

Link with other assessment tasks

See Measurement, Analysis and Improvement Task 6.3.4.8 regarding complaints.

See Management Task 6.1.4.6 on impartiality.

6.5.4.10 Verify that the CAB maintained records on the regulatory review and decision activities.

Applicable Requirement

ISO/IEC 17065:2012 clauses: 7.12

IMDRF/GRRP WG/N59 clauses: 7.12

No additional guidance

6.5.4.11 Verify the effectiveness of the regulatory review and decision process.

Applicable Requirement

ISO/IEC 17065:2012 clauses: Not applicable

IMDRF/GRRP WG/N59 clauses: 8.1.3

Guidance

The CAB must perform measuring, monitoring and the analysis of their regulatory review program to provide information relating to the characteristics and trends of their processes such as: consistency in regulatory review reports, bias in identified deficiencies, feedback from medical device manufacturers, etc.

The assessors should review the process by which the CAB monitors the performance of the regulatory review program. This information can often be found by reviewing the information evaluated in management review, or as part of the CAB's corrective actions.

Typical evidence

Records of corrective actions, management review inputs

Link with other assessment tasks

See Measurement, Analysis and Improvement Task 6.3.4.2 regarding analysis of data, and Management Task 6.1.4.7

6.5 Process: Information Management

6.6.1 Purpose

The purpose of the Information Management Process is to ensure effective documentation control and communication, between the CAB and the medical device manufacturers, the Regulatory Authorities and the public. The Information Management Process must ensure the necessary level of confidentiality.

6.6.2 Outcomes

As a result of the assessment of the Information Management process, objective evidence will show whether the CAB has:

- Established an effective process for documentation control.
- Made appropriate information available about its activities and clients to Regulatory Authorities and the public.
- Established appropriate contractual arrangements with its clients.
- Implemented appropriate arrangements to safeguard confidentiality.

6.6.3 Risks relative to this process

The failure of the Information Management Process poses the following risks:

- Lack of control of internal documentation leading to inappropriate regulatory review decisions;
- Lack of control of information shared with external parties, potentially providing inaccurate, obsolete or misleading information; and/or,
- Leak of confidential information

6.5.4 Assessment Tasks

6.6.4.1 Verify that procedures have been defined, documented, and implemented for the control of documents and records required by the quality management system.

Confirm the organization retains records for an appropriate time period.

Applicable requirements

ISO/IEC 17065:2012 clauses: 7.12, 8.4

IMDRF/GRRP WG/N59 clauses: 7.12, 8.3, 8.4

Guidance

If the CAB uses an electronic document control system, including the use of electronic signatures, the assessor should verify that the CAB ensures that the electronic signature has the same value as a handwritten signature, and validates the system to ensure the authenticity of the signature, and that a signed document cannot be tampered with.

Records related to certification activities should be retained for a time frame specified by the recognizing Regulatory Authority. Records related to conformity to the requirements in N59 should be retained for at least 15 years from their creation.

The assessor should verify that regulatory review records are uniquely identified, including their version. If a regulatory review record needs to be amended, the changes and their author should also be identifiable. The version of the regulatory review record shall be traceable to the decision on the manufacturer's conformity.

Typical evidence

Document Control and record controls procedures, client file

6.6.4.2 Verify that the CAB made publicly accessible, or provided upon request, information describing its regulatory review programs.

Applicable Requirement

ISO/IEC 17065:2012 clauses: 4.6, 7.8

IMDRF/GRRP WG/N59 clauses: 4.6

Guidance

The assessor should identify the ways in which the CAB provides information about its regulatory review programs.

Link with other assessment tasks

Publicly available information may affect the CAB's impartiality (see Management 6.1.4.6).

6.6.4.3 Verify that the CAB has provided detailed information to the medical device manufacturer regarding the regulatory review and decisions process, including the process addressing complaints and appeals, as well as fees.

Applicable Requirement

ISO/IEC 17065:2012 clauses: 4.6, 7.8

IMDRF/GRRP WG/N59 clauses: 4.6.3, 7.2

No additional guidance

Typical evidence

This information may be found in contracts, conditions on certificates, website, etc.

6.6.4.4 Verify that the CAB has established contractual arrangements with the medical device manufacturers specifying the responsibilities of both parties.

Verify that the contractual arrangements allow for the recognizing Regulatory Authority to assess the CAB's regulatory reviews to the necessary extent.

Verify that the contractual arrangements allow the recognizing Regulatory Authority to exchange information with other Regulatory Authorities that maintain Confidentiality Agreements.

Verify that the contractual arrangements specify requirements regarding the reference to their conformity status and potential action to deal with misuse or misrepresentation of the conformity status.

Applicable Requirement

ISO/IEC 17065:2012 clauses: 4.1.2, 4.1.3

IMDRF/GRRP WG/N59 clauses: 4.1.4, 4.1.5, 4.1.6

Guidance

The assessor should verify that the contractual arrangements do not restrict the exchange of information in relation to the manufacturer between the Regulatory Authorities that maintain Confidentiality Agreements.

In situations where marketing authorization can only be granted by the recognizing Regulatory Authority, the assessor should verify that a contractual arrangement does not imply that a certification document issued by the CAB represents marketing approval of the medical device.

Typical evidence

Contractual arrangements

6.6.4.5 Verify that the CAB provides the recognizing Regulatory Authorities with regulatory review reports and certificates that meet regulatory requirements, as well as other required and requested reports and communications.

Applicable Requirement

ISO/IEC 17065:2012 clauses: Not applicable
 IMDRF/GRRP WG/N59 clauses: 7.6, 7.7, 9.0

Guidance

The assessor should verify that the CAB communicates to the recognizing Regulatory Authority(s) within 5 working days of becoming aware of any of the following, regardless of the source of information that makes the CAB aware of such reportable situations:

- Any fraudulent activities by, or counterfeit products from, any medical device manufacturer;
- Information that may require safety-related regulatory action (such as design changes that do not adequately address a postmarket issue involving marketed devices);
- A decision to refuse, suspend, reinstate, restrict or withdraw a certificate; or
- Significant changes relevant to the CAB’s recognition, in any aspect of its status or operations (see the list in N59 clause 9.1.5).

Typical evidence

Records of communication between the CAB and the recognizing Regulatory Authority, client file, suspended/withdrawn certificates

6.6.4.6 Verify that the CAB made information on certifications granted, suspended or withdrawn publicly accessible or provided upon request.

Applicable Requirement

ISO/IEC 17065:2012 clauses: 7.8, 7.11
 IMDRF/GRRP WG/N59 clauses: 4.6

Specific Guidance

Per IMDRF GRRP WG/N59, this task may not apply to CABs operating in a jurisdiction where final certification decisions are made by recognizing Regulatory Authority and not the CAB.

Typical Evidence

Procedures for sharing information with the public, records of such communications

6.6.4.7 Verify that the CAB has defined, documented and implemented procedures and legally enforceable arrangements to safeguard confidentiality, unless disclosure is required by IMDRF documents or by law.

Applicable Requirement

ISO/IEC 17065:2012 clauses: 4.5
 IMDRF/GRRP WG/N59 clauses: 4.5

No additional guidance

Typical evidence

Procedures, contractual agreements between an CAB and a manufacturer, and contractual agreements between an CAB and its employees or external resources.

ANNEX 1: Sample On-Site Assessment Plan

The information below is an excerpt from a sample CAB on-site assessment plan for an initial recognition or re-recognition assessment. The applicable requirements from ISO/IEC 17065:2012 and IMDRF/GRRP WG/N59 and N40 have been added to the tasks, for reference. When issuing the plan to a CAB, it is preferable to issue without the clauses.

Day 1

Date

Facility

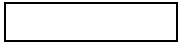
Time

Assessor

Assessment Model Key Process and Assessment Step

Process: Management

1. Legal entity, legal responsibility, liability, financing and eligibility *[ISO/IEC 17065:2012: 4.1.1, 4.3; IMDRF/GRRP WG/N59: 4.1.1, 4.1.2, 4.1.3, 4.3.1]*
2. Management System documents *[ISO/IEC 17065:2012: 8.0; IMDRF/GRRP WG/N59: 8.0]*
3. Quality policy, quality objectives and quality planning *[ISO/IEC 17065:2012: 8.1]*
4. Organizational structure, responsibility, authority *[ISO/IEC 17065:2012: 6.1.1.1; IMDRF/GRRP WG/N59: 5.1.3]*
5. Adequacy of regulatory review resources *[ISO/IEC 17065:2012: 7.2.1, 7.2.2; IMDRF/GRRP WG/N59: 6.1.2]*
6. Management of impartiality *[ISO/IEC 17065:2012: 5.2; IMDRF/GRRP WG/N59: 5.2, 6.3.13; IMDRF/GRRP WG/N40: 6.0]*
7. Management review *[ISO/IEC 17065:2012: 8.5; IMDRF/GRRP WG/N40: 8.1.3]*



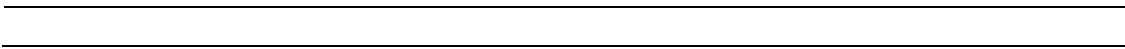
Process: Use of external resources

1. Extent of use and controls of external resources [*ISO/IEC 17065:2012: 6.2.2; IMDRF/GRRP WG/N59: 6.2.2, 6.2.3, 6.2.4, 6.2.5, 6.2.6, 6.2.7*]
2. Contractual arrangements with external resources [*ISO/IEC 17065:2012: 4.2.7, 6.2.2; IMDRF/GRRP WG/N40: 6.0*]
3. Internal competence to review the outcome of outsourced activities [*ISO/IEC 17065:2012: 6.1.2; IMDRF/GRRP WG/N59: 6.2.4*]



Process: Measurement, Analysis & Improvement

1. Procedures relative to measurement, analysis and improvement [*ISO/IEC 17065:2012: 8.7*]
2. Sources of quality data [*ISO/IEC 17065:2012: 8.1.3, 8.7; IMDRF/GRRP WG/N59: 6.1.13, 8.7, 8.8*]
3. Investigation, corrections, corrective actions and preventive actions to address nonconformities and potential nonconformities [*ISO/IEC 17065:2012: 8.7, 8.8; IMDRF/GRRP WG/N59: 7.12.1, 8.7, 8.8*]
4. Reporting of corrective actions impacting the recognition [*IMDRF/GRRP WG/N59: 9.0*]



Day 2

Date

Facility

Time

Assessor

Assessment Model Key Process and Assessment Step

Process: Measurement, Analysis & Improvement

5. Decision on conformity to regulatory requirements supported by nonconforming regulatory reviews or review reports [*ISO/IEC 17065:2012: 7.7, 8.7; IMDRF/GRRP WG/N59: 7.12.1*]

6. Management of nonconforming review reports or certification documents after their sharing and publication [*ISO/IEC 17065:2012: 8.7; IMDRF/GRRP WG/N59: 7.12.1, 9.0*]

7. Internal audits [*ISO/IEC 17065:2012: 8.6; IMDRF/GRRP WG/N59: 8.1.4, 8.6*]

8. Complaint handling and management [*ISO/IEC 17065:2012: 7.13; IMDRF/GRRP WG/N59: 7.13*]

9. Communication with external resources having contributed to a nonconformity or complaint [*ISO/IEC 17065:2012: 7.13*]

10. Outputs of the Measurement, Analysis and Improvement process as inputs into the management review [*ISO/IEC 17065:2012: 8.5*]

Process: Competence Management

1. Identification of necessary competence to operate as a recognized CAB [*ISO/IEC 17065:2012: 6.1.1.2, 6.1.2, 7.3.1; IMDRF/GRRP WG/N59: 6.1, 6.2.3, 7.3.2; MDRF/GRRP WG/N40: 5.0*]

1. Procedure and criteria for competence evaluation of all personnel involved in regulatory review and certification related activities [ISO/IEC 17065:2012: 6.1.2; IMDRF/GRRP WG/N59: 6.1.3; IMDRF/GRRP WG/N40: 10.1]
3. Identified personnel with demonstrated competence [ISO/IEC 17065:2012: 6.1.2.2; IMDRF/GRRP WG/N59: 6.1.1; IMDRF/GRRP WG/N40: 13.0]
4. Training to the regulatory review process and certification requirements and access to corresponding current documents [ISO/IEC 17065:2012: 6.1.2.1, 6.1.2.2; IMDRF/GRRP WG/N59: 6.1.1, 6.1.3, 6.1.5, 6.1.6; IMDRF/GRRP WG/N40: 10.0]
5. Monitoring of personnel's competence and performance [ISO/IEC 17065:2012: 6.1.2; IMDRF/GRRP WG/N59: 6.1.10; IMDRF/GRRP WG/N40: 11.0, 14.0]
6. Personnel's individual file [ISO/IEC 17065:2012: 6.1.2.2; IMDRF/GRRP WG/N59: 6.1.13; IMDRF/GRRP WG/N40: 13.0]
7. Effectiveness of the competence evaluation methods and the competence management process [ISO/IEC 17065:2012: 6.1.2.1; IMDRF/GRRP WG/N59: 6.1.10; IMDRF/GRRP WG/N40: 11.0]

Day 3

Date

Facility

Time

Assessor

Assessment Model Key Process and Assessment Step

Process: Audit & Decision

1. Procedures for the control of the regulatory review process [ISO/IEC 17065:2012: 7.0; IMDRF/GRRP WG/N59: 7.0]

2. Regulatory review program establishment and update; planning of regulatory reviews
[ISO/IEC 17065:2012: 7.0; IMDRF/GRRP WG/N59: 7.0, 7.12.1]

3. Selection and assignment of competent regulatory review team, and communication prior to the review
[ISO/IEC 17065:2012: 7.3, 7.4, 7.5, 7.6; IMDRF/GRRP WG/N59: 7.2, 7.3]

4. Regulatory review performance and report
[ISO/IEC 17065:2012: 7.3, 7.4, 7.5, 7.6, 7.7; IMDRF/GRRP WG/N59: 7.2, 7.3, 7.4, 7.5, 7.6, 7.7]

5. Review of deficiencies identified as part of the regulatory review
[ISO/IEC 17065:2012: 7.4.6, 7.4.7, 7.4.8; IMDRF/GRRP WG/N59: 7.12.1]

6. Consistency in regulatory review procedures and changes in certification status
[ISO/IEC 17065:2012: 7.6, 7.7, 7.10; IMDRF/GRRP WG/N59: 7.6, 7.7, 7.11, 7.12.1]

7. Communication and follow-up of the decision
[ISO/IEC 17065:2012: 7.1, 7.11, 7.12; IMDRF/GRRP WG/N59: 7.6, 7.7, 9.0]

8. Ensuring follow-up required by manufacturers
[ISO/IEC 17065:2012: 7.9; IMDRF/GRRP WG/N59: 7.6]

9. Appeals
[ISO/IEC 17065:2012: 7.13; IMDRF/GRRP WG/N59: 7.13, 8.0]

10. Regulatory review and decision records
[ISO/IEC 17065:2012: 7.12; IMDRF/GRRP WG/N59: 7.12]

11. Effectiveness of the regulatory review and decision process
[IMDRF/GRRP WG/N59: 8.1.3]

Day 4

Date

Facility

Time

Assessor

Assessment Model Key Process and Assessment Step

Process: Information Management

1. Control of documents and records [*ISO/IEC 17065:2012: 7.12, 8.4; IMDRF/GRRP WG/N59:7.12, 8.3, 8.4*]
2. Public information on the regulatory review program [*ISO/IEC 17065:2012: 4.6, 7.8; IMDRF/GRRP WG/N59:4.6*]
3. Provision to the medical device manufacturers of detailed information on the regulatory review- and decision-related processes [*ISO/IEC 17065:2012: 4.6, 7.8; IMDRF/GRRP WG/N59: 4.6.3, 7.2*]
4. Contractual agreements with the medical device manufacturer [*ISO/IEC 17065:2012: 4.1.2, 4.1.3; IMDRF/GRRP WG/N59: 4.1.4, 4.1.5, 4.1.6*]
5. Sharing of information with recognizing Regulatory Authorities on regulatory review activities, decisions on regulatory conformity and certification status [*IMDRF/GRRP WG/N59: 7.6, 7.7, 9.0*]
6. Provision to the public of information on certification status or certifications granted, suspended or withdrawn [*ISO/IEC 17065:2012: 7.8, 7.11; IMDRF/GRRP WG/N59: 4.6*]
7. Control of confidential information [*ISO/IEC 17065:2012: 4.5; IMDRF/GRRP WG/N59:4.5*]